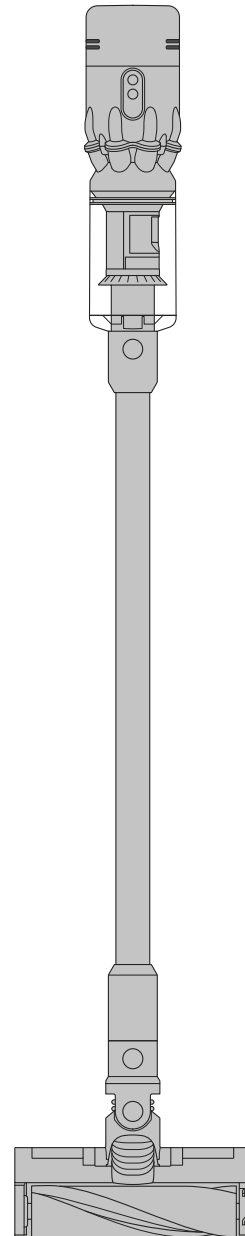


dyson micro 1.5kg

User manual

SV12 JN.00000 PN.000000-00-00
00.00.00 VERSION NO.01



In the box

Getting started

Charging your machine

Caring for your floors

Emptying your bin

Cleaning your bin

Washing your filter

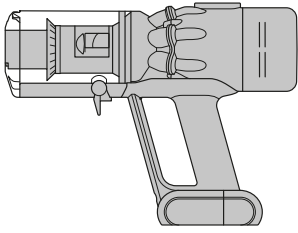
Washing your brush bar

Cleaning your tools

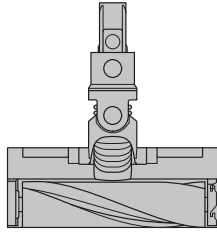
Clearing blockages

Looking after your machine

In the box



Vacuum cleaner



Micro Fluffy™ cleaner head
Soft woven nylon and anti-static carbon fibre filaments remove dust from hard floors. Smaller than a standard Fluffy™ cleaner head - with a low profile to reach under furniture.



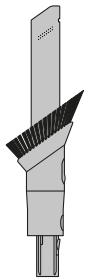
Wand



Charger
Charges your vacuum with or without a dock.

Some tools may not be included.

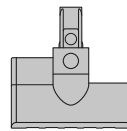
You can buy additional tools at www.dyson.com.



Combi-crevice tool
Two tools in one – narrow nozzle and brush, for quick switching between cleaning and dusting tasks.



Light pipe crevice tool
Crevice tool with LED lights lets you reach into dark, narrow spaces and see where you're cleaning.



Mini motorised tool
Motorised brush bar, concentrated in a smaller head to remove stubborn dirt from mattresses, upholstery and stairs.



Worktop tool
Engineered for cleaning kitchen worktops, tables and hard surfaces.

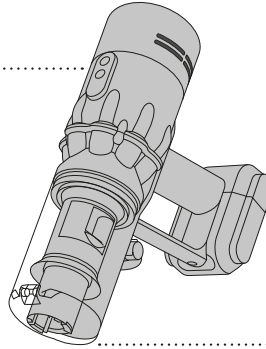


Wand clip
Clips to your vacuum's wand to hold tools.

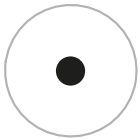
Getting started



Power button
Press the Power button once for comfortable, continuous cleaning.



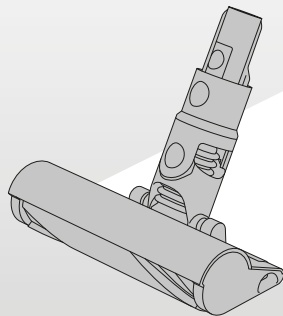
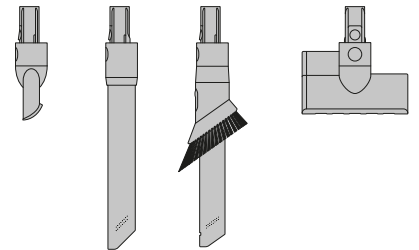
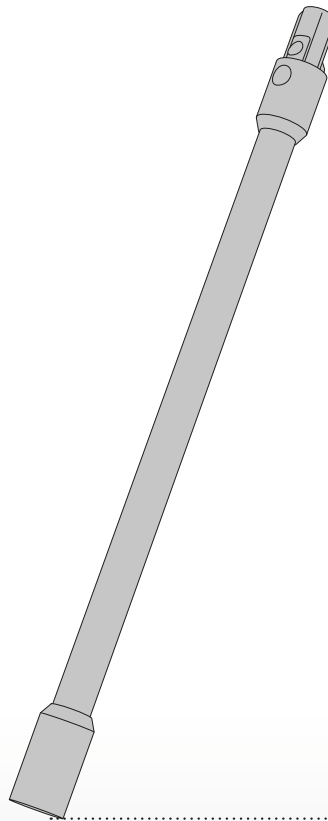
MAX



Power modes
Press the button to change power modes.

Max mode
Delivers maximum power. For intensive cleaning of ground-in dirt.

Eco mode
The optimum balance of power and run time



Micro Fluffy™ cleaner head
Soft woven nylon and anti-static carbon fibre filaments remove dust from hard floors. Smaller than a standard Fluffy™ cleaner head - with a low profile to reach under furniture.

Charging your machine

For the best experience, we recommend fully charging your machine, and any additional batteries, as soon as you open the box and after every clean.

The LED light on the end of the handle will flash when the power is running low and you need to put your battery on to charge.

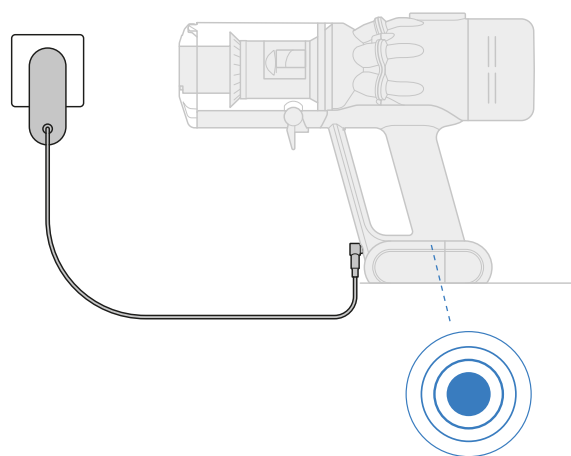
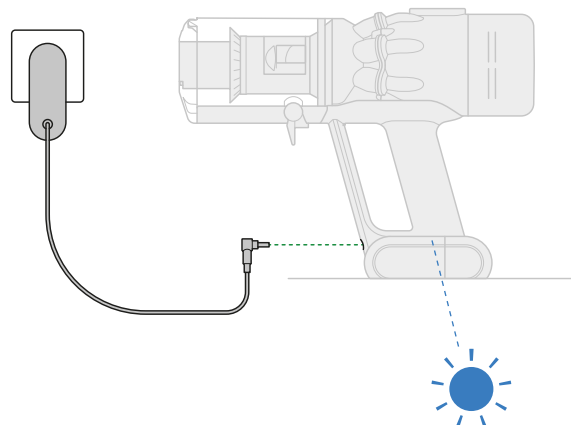
Connect the charger directly to the charging point on the base of the handle of your machine. You can also connect to your dock as shown in the installation instructions supplied with your dock.

The LED light on the end of the handle will pulse with a blue LED light when charging, and the light will go out when fully charged.

It can take up to four hours to fully charge your battery. Your battery has been designed to be left on charge.

Your machine won't operate or charge if the ambient temperature is below 5°C (41°F). This is designed to protect both the motor and battery.

You can help prolong the battery life by leaving your machine to cool down before recharging.



Caring for your floors

Check that the underside of the cleaner head or tool is clean and free from any objects that may cause damage.

Before vacuuming your flooring, rugs, and carpets, check the manufacturer's recommended cleaning instructions.

This machine is designed for use on hard floors. The brush bar on your machine can damage certain flooring. Some rug materials may fuzz if a rotating brush bar is used when vacuuming. If this happens, we recommend vacuuming without the motorised floor tool and consulting with your flooring manufacturer.

Emptying your bin

Empty your bin as soon as the dirt reaches the MAX mark.
You may need to clean the filter more often if you use your machine with a full bin.

Remove your wand

Press the red wand release button, on the top of the wand, and pull the wand away from the bin.

Release the dirt

Hold your vacuum over a bin.

Push the red bin release button, taking care not to press the power button.
The bottom of the bin will open and the shroud will slide down inside the bin, wiping away any dirt.

If the bin doesn't open, check the bin release button is pushed down fully.

To remove the bin for emptying:

If the bin doesn't empty fully, remove the bin and empty the dirt.

Press the red button located on the bin runner to release the bin and slide your bin off the runner.

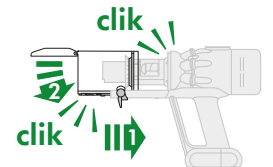
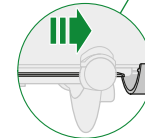
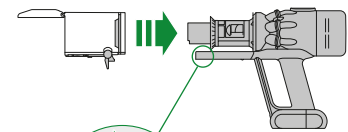
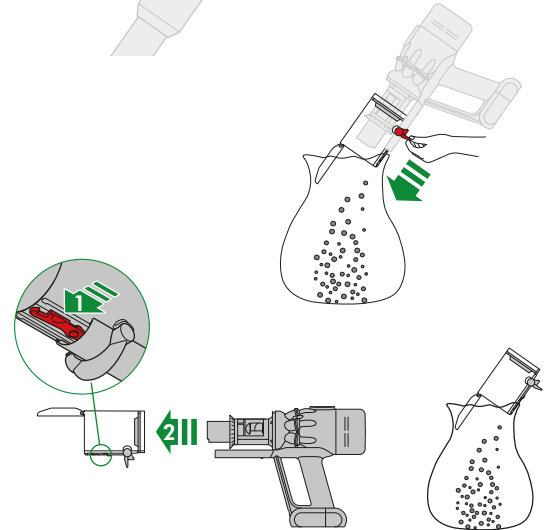
Minimise dust contact

Cover your bin tightly in a dust proof bag while you empty. Remove the bin carefully, seal the bag tightly and dispose.

Reassemble your machine

If you have removed your bin, slide it back on to the runner. Make sure that the bin and lid are both securely in position.

Push the bin base upwards until the bin and lid both click into place.
Reconnect the wand.



Cleaning your bin

Don't put any part of your machine in a dishwasher or use detergents, polishes or air fresheners.

Clean your bin

If it is necessary to clean your bin, empty it as shown in the 'Emptying your bin' section.

Press the red button located on the bin runner to release the bin and slide your bin off the runner.

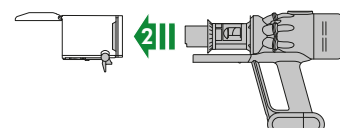
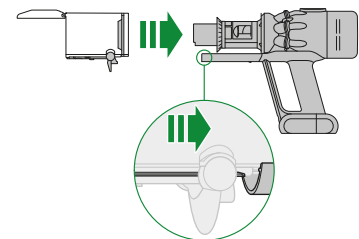
Only clean your bin with a damp cloth.

Make sure that the bin and seals are completely dry before replacing.

Replace your bin

Insert the spine on to the bin runner.

Close your bin by pushing the bin base upwards until the bin and bin base click into place.



Washing your filter

Wash your filter at least once a month to maintain the best performance.

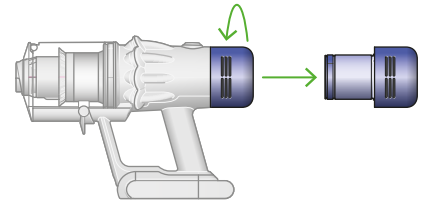
Make sure the filter is completely dry before refitting.

Twist off your filter

Don't put any part of your machine in a dishwasher or use detergents, polishes or air fresheners.

Turn your filter anti-clockwise and pull it away from your machine.

Before washing your filter, tap it gently over a bin to remove any loose dust and debris.

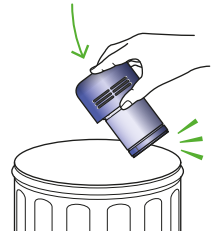


Wash your filter

Wash the outside of the filter, rubbing with your fingers to remove the dirt.

Carefully rinse the inside filter, without allowing water to fill the filter.

Repeat these steps until the water runs clear.



Shake and dry

Empty the filter and shake firmly to remove excess water.

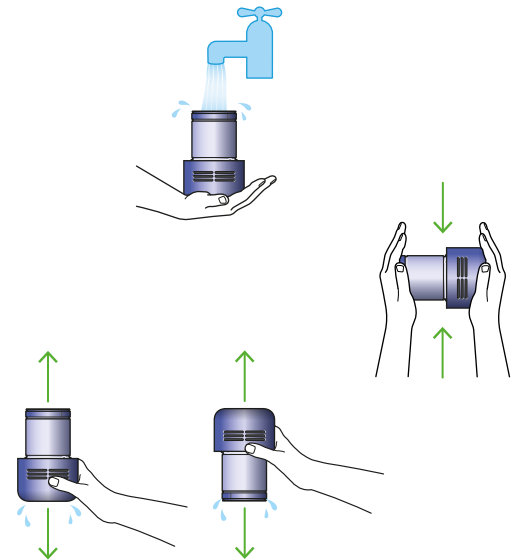
Keep shaking until there's no water coming from the filter.

Place your filter end up, as shown.

Leave your filter to dry for at least 24 hours in a well-ventilated, warm place.

Don't dry your filter in a tumble dryer, microwave or near a naked flame.

Important: your filter must be completely dry before you put it back into the machine. Your machine could be damaged if used with a damp filter.



Refit your filter

To refit your filter, slide it onto the handle and turn it clockwise until it clicks into place.

Your filter may need more frequent washing if you vacuum fine dust, use Max mode frequently or use with the bin full.



Washing your brush bar

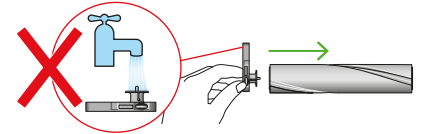
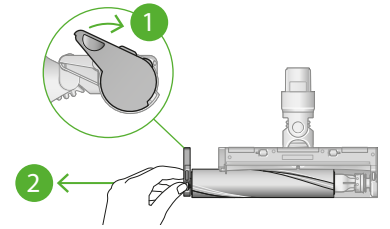
To maintain optimum performance, check and wash the brush bar regularly.

Remove brush bar

Don't put any part of your machine in a dishwasher or use detergents, polishes or air fresheners.

Press the cleaner head release button to remove it from the wand.

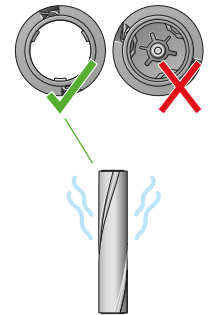
Pull the brush bar off the end cap and put the end cap to one side, don't wash it.



Wash and dry brush bar

Hold your brush bar under cold tap water and gently rub to remove any lint or dirt. Keep washing until the water runs clear.

Stand the brush bar upright and leave for at least 24 hours to dry.



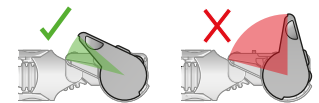
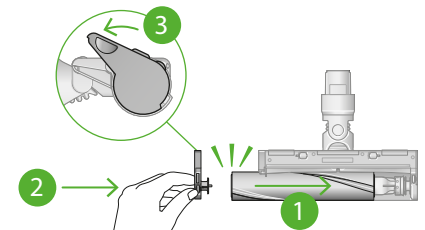
Replace your brush bars

Make sure your brush bar is completely dry before refitting.

Reattach the end cap to the brush bar and slide it back into the cleaner head.

Rotate the end cap until it clips securely back into position.

The cleaner head housing is not washable and should only be wiped over with a damp lint-free cloth.

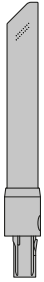


Cleaning your tools

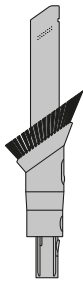
Don't put any part of your machine in a dishwasher or use detergents, polishes or air fresheners.

Wipe with a damp, lint-free cloth, without touching the connector end.

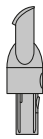
Make sure your tools are completely dry before using.



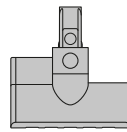
Light pipe crevice tool



Combi-crevice tool



Worktop tool



Mini motorised tool

Clearing blockages

If your machine detects a blockage, the motor will pulse six times. You won't be able to use your machine until the blockage has been cleared.

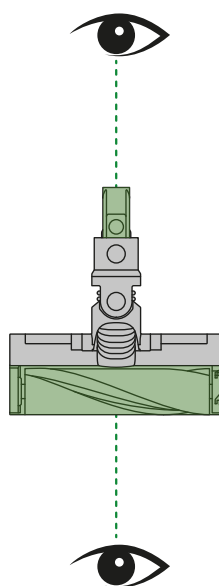
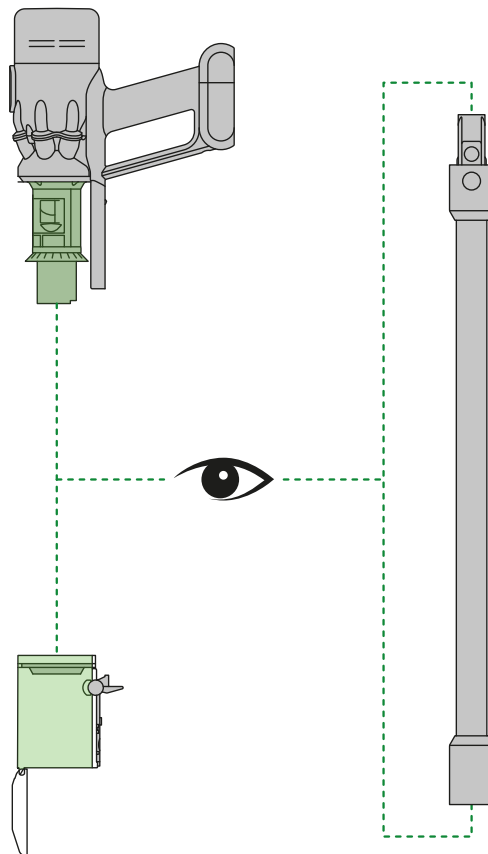
If you try to use your machine when the motor is pulsing, it will automatically cut out.

Leave your machine to cool down before looking for blockages and, for your safety, take care not to touch the power button.

Disconnect your machine from the charger before looking for blockages. Be careful not to touch the trigger and be aware of sharp objects.

Leave your machine to cool down before looking for blockages.

Don't use your machine when looking for blockages as this could cause injury.



Looking after your machine

To always get the best performance from your machine, it's important to clean it regularly and check for blockages.

Look after your machine

If your machine is dusty, wipe with a damp lint-free cloth.

Check for blockages in the cleaner head, tools and main body of your machine.

Wash your filter regularly and leave to dry completely.

Don't use detergents or polishes to clean your machine.

Look after your battery

To get the best performance and life from your battery, use Eco mode.

Your machine won't operate or charge if the ambient temperature is below 5°C(41°F). This is designed to protect both the motor and battery.

Your serial numbers

You can register your machine using the serial number found on the bottom of your machine.

You can find your serial numbers on your machine, battery and charger. Use your serial number to register.