

airwrap i.d.

Dyson Airwrap i.d logo

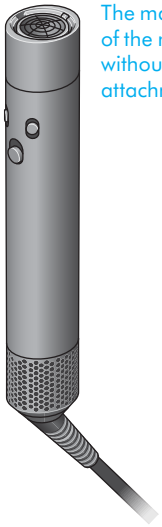
User manual



In the box
Getting started
Connecting to the MyDyson™ app
Using your attachments
Pre-styling
Curling

Shaping
Volumizing
Smoothing
Regular filter maintenance

In the box



The main body of the machine without any attachments.

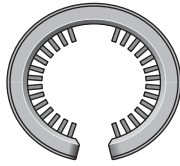
Dyson Airwrap i.d.™ multi-styler and dryer main body

The Fast dryer attachment.



Fast dryer

A cylindrical tool that fits on to the filter at bottom of the Dyson Airwrap multi-styler for cleaning.



Filter cleaning brush

You can buy additional attachments at www.dyson.my/products/hair-care/haircare-accessories



30mm Airwrap™ barrel



40mm Airwrap™ barrel



20mm Airwrap™ barrel



30mm Airwrap™ long barrel



40mm Airwrap™ long barrel



Conical Airwrap™ barrel



Soft smoothing brush



Firm smoothing brush



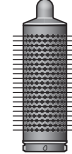
Small soft smoothing brush



Small firm smoothing brush



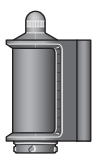
Small round volumizing brush



Round volumizing brush



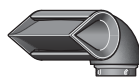
Large volumizing round brush



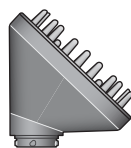
Dryer+ Flyaway smoother



Fast dryer

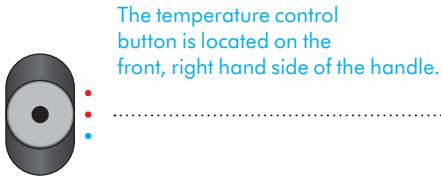


Blade concentrator



Diffuser

Getting started



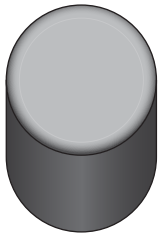
The temperature control button is located on the front, right hand side of the handle.

Temperature control
Three temperature settings including constant cold.



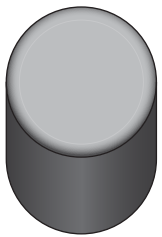
Airflow control
3 airflow speeds.

The airflow control button is located on the front, left hand side of the handle. It is a slider button that pushes upwards and downwards.



Power on/off
Sliding switch

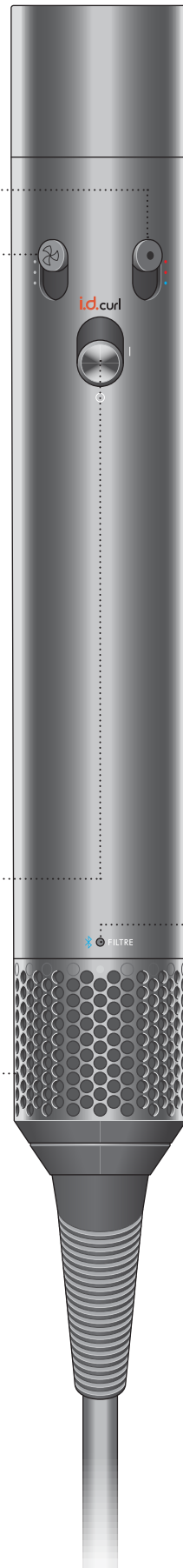
The power button is located in the middle of the handle. It is a slider button that pushes upwards and downwards.



i.d. curl™ personalized curling sequence
Complete the tutorial in the MyDyson™ app to unlock this feature. Slide up and release to activate.

Removable filter cage
Easy to remove for cleaning (see the 'Regular filter maintenance' section for details).

The filter cage is located at the bottom of the handle.



The LED lights are located at the bottom of the handle above the filter cage.



LED
Flashing blue – ready to connect.

Constant blue – connected.

Clean the filter. See the 'Regular filter maintenance' section for details.

If the red LED lights, and the filter has already been cleaned, contact the Dyson Helpline.

Unlock i.d. curl™ personalized curling sequence by connecting to the MyDyson™ app

Download on the App Store. Get it on Google Play.

Step 1

Download the MyDyson™ app and create your account. If you already have an account, log in.

Step 2

Power on your Dyson Airwrap i.d.™ multi-styler and dryer and add machine to the app. Bluetooth® wireless technology must be enabled on your mobile device.

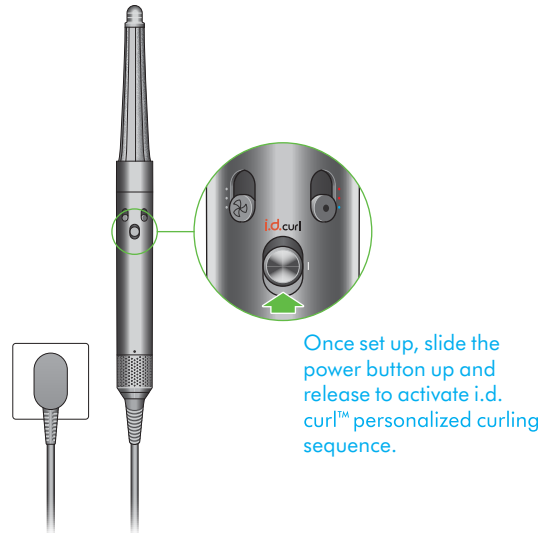
Step 3

Follow the steps to pair your Airwrap i.d.™. Airflow will be active during this time.

Step 4

Once paired, power off your Airwrap i.d.™. Continue set-up in the app to enable features such as the i.d. curl™ personalized curling sequence.

Logos of MyDyson app, App store and Google Play.

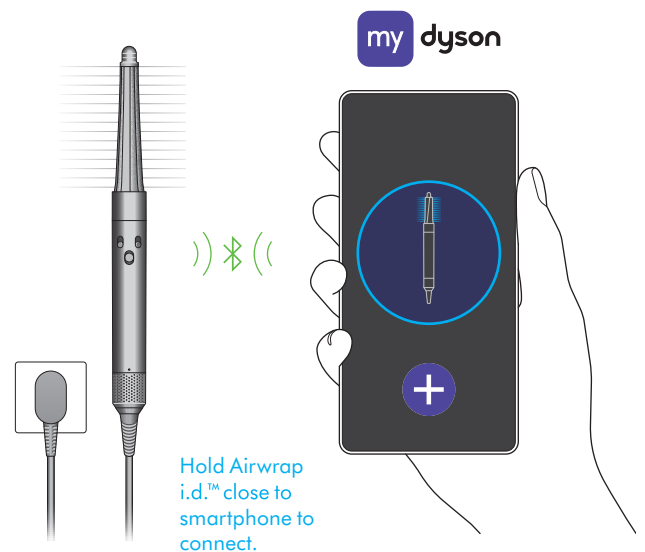


Once set up, slide the power button up and release to activate i.d. curl™ personalized curling sequence.

MyDyson™ app connectivity

App functionality may vary per market. Requires internet connection. Operating system and mobile device requirements for the MyDyson™ app can be found on the App Store or Google Play.

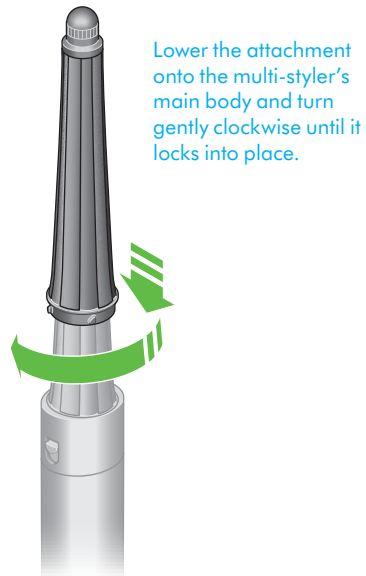
Apple, the Apple logo and Siri are trademarks of Apple Inc., registered in the U.S. and other countries. App Store is a service mark of the Apple Inc., registered in the U.S. and other countries. Google Play, the Google Play logo, Google Assistant are trademarks of Google Inc.



Using your attachments

Connecting the attachment

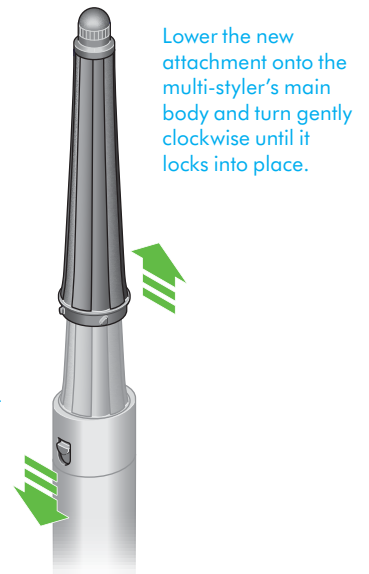
Turn attachment into the main body until it fits securely.



Changing attachments

To change attachment, pull down on the switch to release.

Pull down on the release switch located at the head of the main body and lift the current attachment away.



Cool touch tip

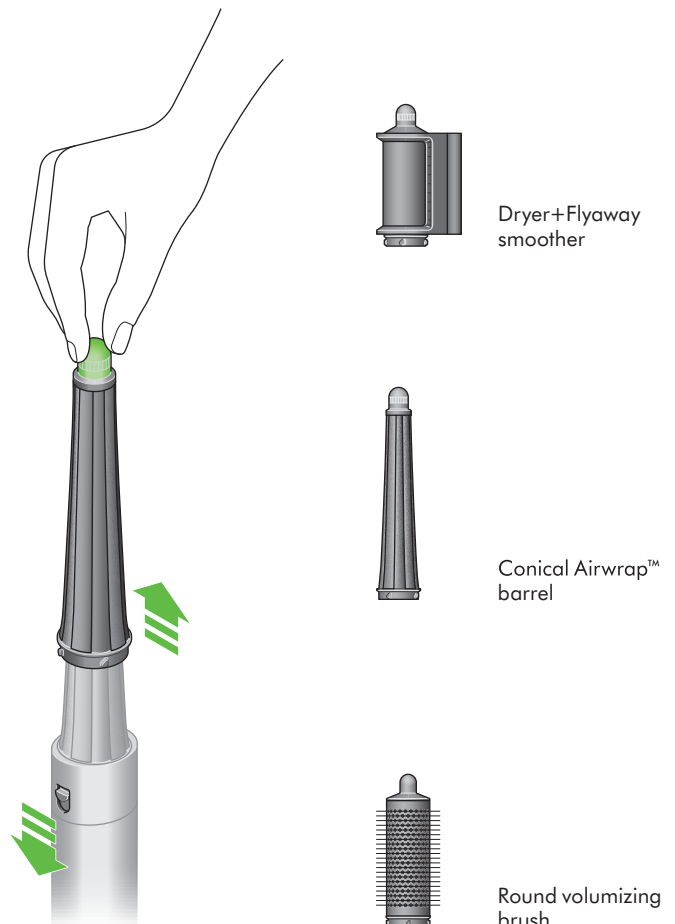
During use, the Dyson Airwrap™ barrels, round brushes and Dryer+Flyaway smoother will get hot. To change to another attachment, hold the tip.

Hold onto the rotating cool tip at the top end of the attachment, pull down on the release switch and lift the attachment away.

Take care when handling hot attachments

Hold the attachment only in the area indicated. Some attachments may need occasional cleaning.

For more information, go to www.dyson.my/products/hair-care/haircare-accessories



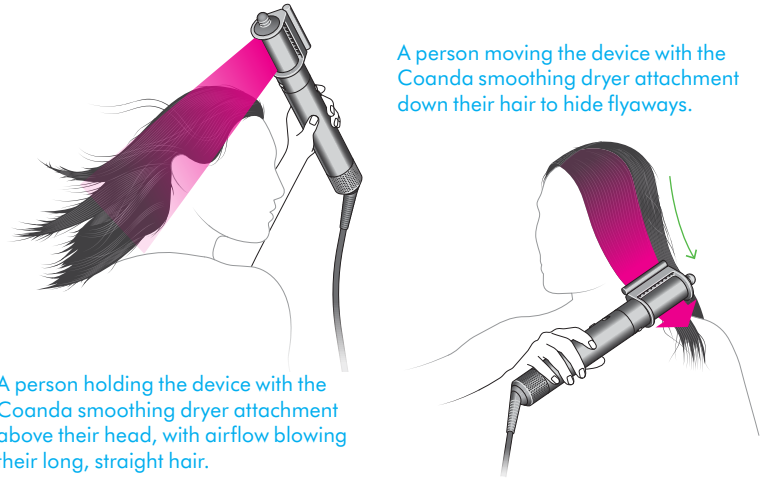
Pre-styling

For straight and wavy hair, use a dryer attachment – Fast dryer or Dryer+Flyaway smoother.

The Dryer+Flyaway smoother has two modes (i) drying and (ii) smoothing. Use the cool tip to switch between the modes.

Hair should look dry but feel cold to the touch before curling with barrels.

For curly and coily hair, use the Firm smoothing brush. Brush hair downwards in small sections, starting from the ends and working towards the roots, until slightly damp to touch.



Curling

Using i.d. curl™ sequence

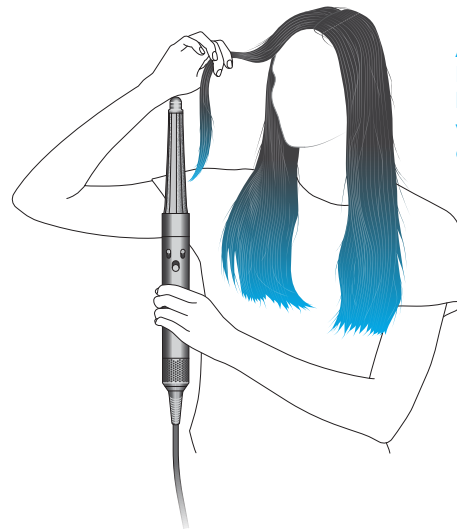
The Dyson Airwrap i.d.™ multi-styler and dryer remembers your personalized i.d. curl™ sequence. This tailors wrapping and styling times to your personal hair profile, using the MyDyson™ app.

Slide up and release the power switch to activate i.d. curl™ sequence, following initial app set-up.

Barrels

Step 1

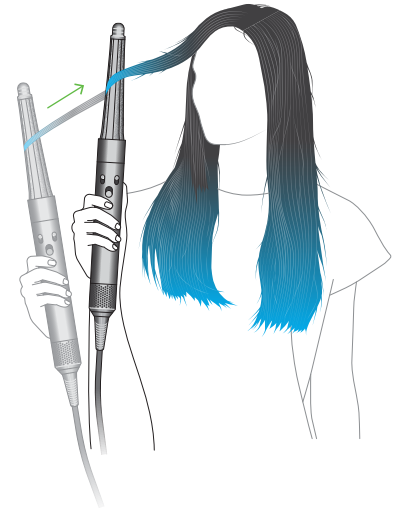
Take a section of hair and bring barrel towards tips. Hair will start to wrap around barrel.



Step 2

Move styler towards head, no need to twist. Your personalized i.d. curl™ sequence will run.

A person moving the device towards their head, allowing more hair to wrap and hold around the barrel.



Step 3

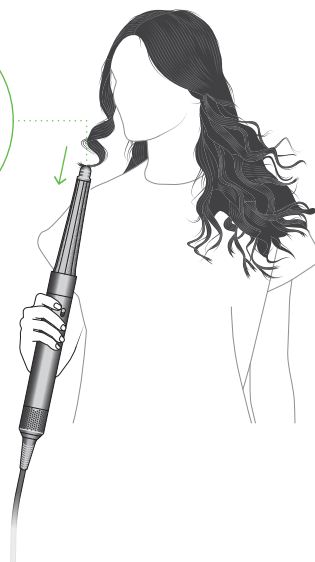
Cold shot will automatically activate to set the curl. Airflow will automatically reduce when sequence is complete.

Move device downwards to release.

To change curl direction, rotate the barrel's cool tip.



Twist the rotating cool tip to change curl direction.



Shaping

Smoothing brushes

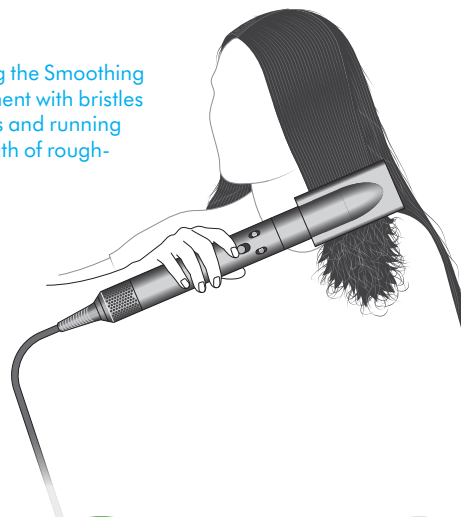
Use Smoothing brush to brush from root to tip.

Tip:

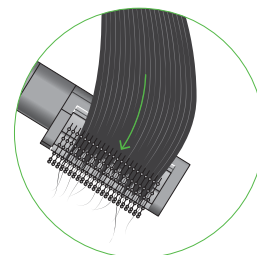
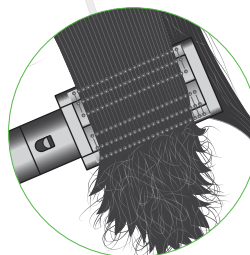
For volume, face bristles outwards.

Turn brush inwards at the ends to create shape.

A person using the Smoothing brush attachment with bristles facing inwards and running along the length of rough-dried hair.



The Smoothing brush with bristles facing outwards combing hair near the tips. As the brush reaches the hair tips, the attachment is turned inwards to help create shape.

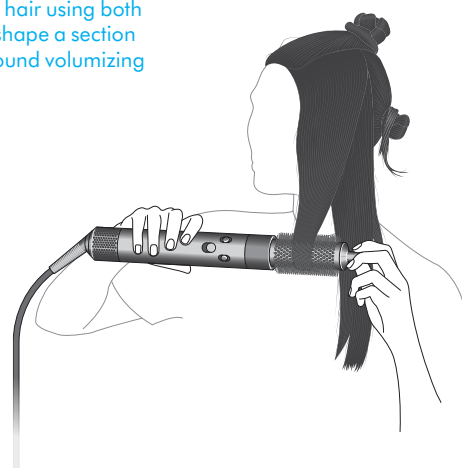


Volumizing

Round volumizing brush

The Round volumizing brush has long fine bristles to direct air into the hair whilst giving body, creating tension to shape the hair as it dries.

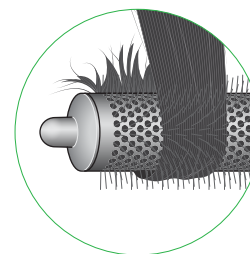
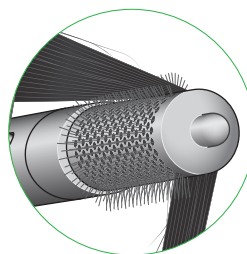
A person with long hair using both hands to curl and shape a section of hair using the Round volumizing brush attachment.



Tip

Lift sections upwards as you dry to add volume.

Wrap hair around and under the brush to shape the ends



The Round volumizing brush with a length of hair over the top of it and to an angle as it brushes from root to tip.

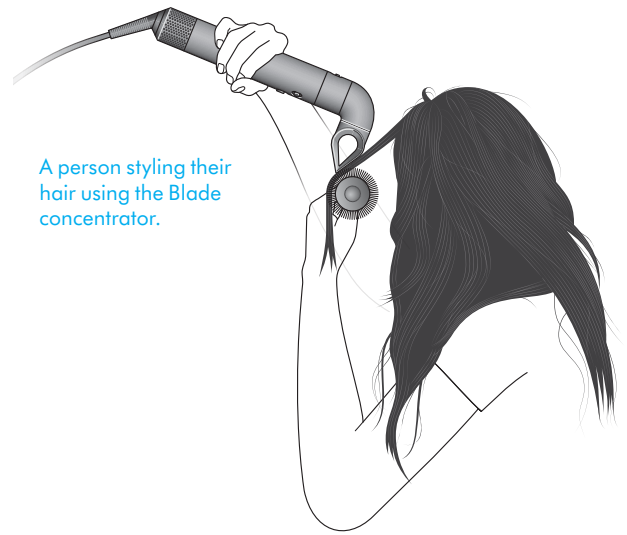
The Round volumizing brush showing the hair curled around shaping the ends.

The Blade concentrator

To create a smooth style.

Dry with a high-velocity blade of air for precision styling.

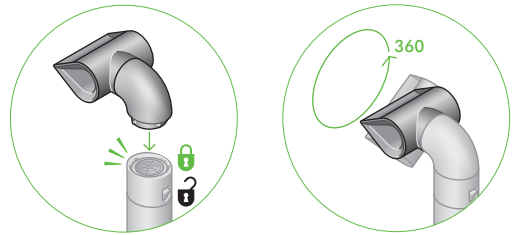
Focused airflow to create bends and flicks with a brush.



A person styling their hair using the Blade concentrator.

Once secured, the Blade concentrator can be rotated 360 degrees for ease when styling.

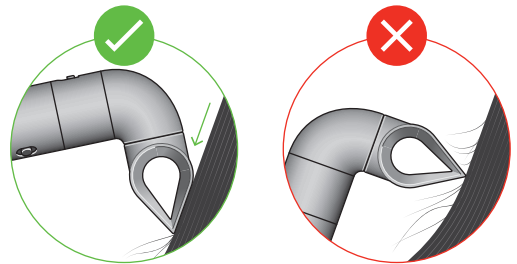
The easy unlocking functionality and 360 degrees maneuverability highlighted on the Blade concentrator attachment.



Tip

Angle attachment down the hair tress to avoid disruption and to create a smooth, aligned finish.

One image showing the Blade concentrator correctly angled down a section of hair, and another angled incorrectly at a perpendicular angle.



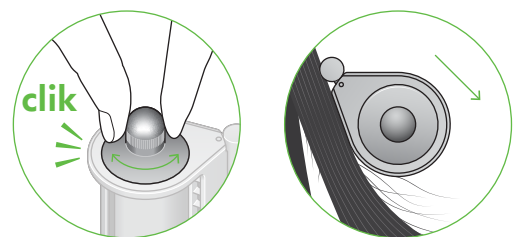
Smoothing

Dryer+Flyaway smoother

Rotate cool tip to select Smoothing mode.

Press against hair to switch airflow direction.

On the side of the Dryer+Flyaway smoother, twist the rotating cool tip to select Smoothing mode. Run the attachment downwards to the hair tips.



Use on dry hair to hide flyaways.

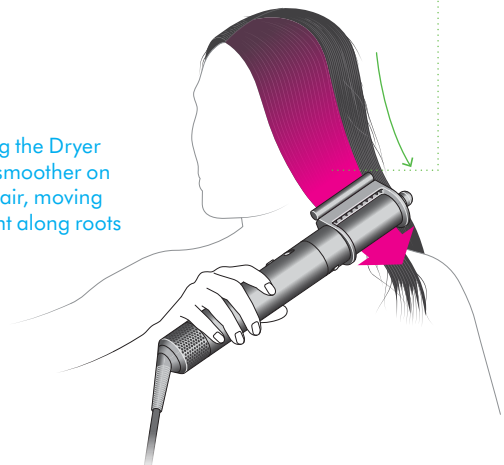
Position against hair until it attracts then slowly run down to tips.

For use on dry and straight hair.

How to use the contact bar

Position contact bar against the head until you hear a click and hair attracts. Run from root to tip to hide flyaways.

A person using the Dryer and Flyaway smoother on dry, straight hair, moving the attachment along roots to tips of hair.



Regular filter maintenance

Filter cleaning is overdue when the white LED starts flashing.

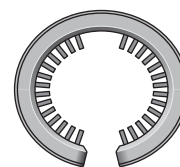
Ensure that you unplug your appliance from the mains electricity supply and allow to cool down before cleaning your filter.

The Dyson Airwrap i.d.™ multi-styler and dryer has highly tuned technology to give outstanding performance.

This technology needs to be kept free from dust and hair product residue. Maintenance is required to maintain performance.



Filter mesh



Filter cleaning brush



Filter cage

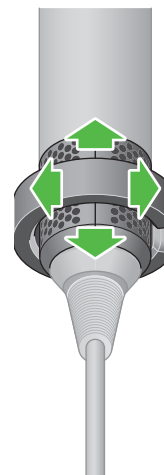
Step 1

Slide the filter cleaning brush over the cable and onto the filter cage.

Using a rotating action, clean the filter cage thoroughly.

Remove the filter cleaning brush.

Slide the filter brush onto the filter cage and rotate from side to side and upwards and downwards to clean the filter cage.

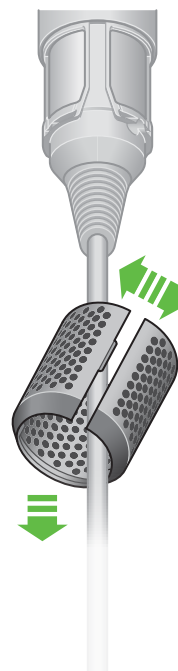


Step 2

Hold the handle of your appliance and pull the filter cage downwards, onto the cable.

Gently pull open the filter cage and slide it off the cable.

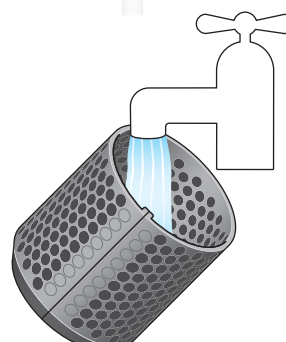
Gently pull the filter cage downwards towards the cable. Open the filter cage and remove.



Step 3

Wash the filter cage under a warm, running tap.

Wash the filter cage under the tap.



Step 4
Shake the filter cage to remove the majority of the excess water, then leave to dry naturally.

Step 5
Using a rotating and up and down action, clean the filter mesh with the filter cleaning brush until all the debris has been removed.

Do not use water or chemicals to clean the filter mesh.

Step 6
Gently pull the filter cage open and slide it onto the cable.

Slide the filter cage towards the handle and twist until it snaps into place.

