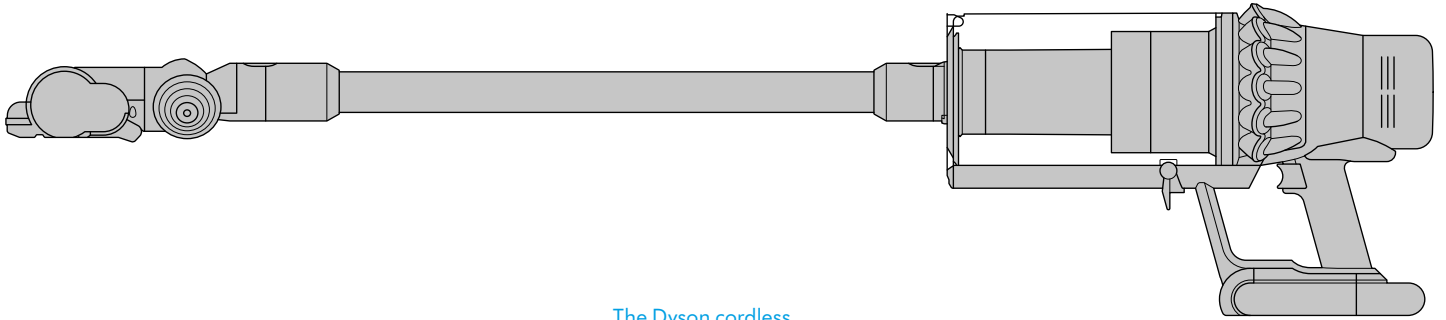


User manual



The Dyson cordless vacuum cleaner in a horizontal position with the wand and cleaner head attached.

In the box

Getting started

The LCD screen

Caring for your floors

Charging your machine

Changing your click-in battery

Emptying your bin

Cleaning your bin

Clearing blockages

Clearing obstructions from your

Motorbar™ cleaner head

Clearing blockages from your

Hair screw tool

Washing your filter

Washing your Illuminated

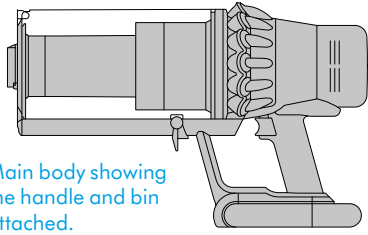
cleaner head brush bar

Cleaning your tools

Looking after your machine

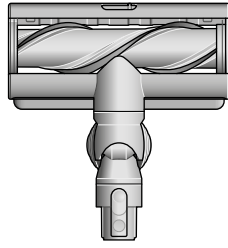
In the box

Your machine will come with one or more of these cleaner heads – not all will be included.

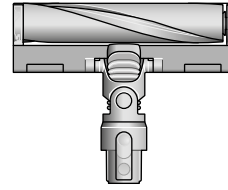


Main body showing the handle and bin attached.

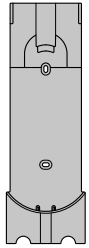
A brush bar located inside the cleaner head and a suction control slider located on the front.



A soft fluffy brush bar housed within the cleaner head. There is an electrical connector end that can attach to the end of the wand or directly to the machine.



Vacuum cleaner



A rectangular dock that needs to be fixed to a wall with screws.



Charger

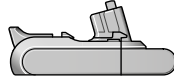
Charges your vacuum with or without a dock.

The charger is a one piece unit with the plug, connector end and cable.

Digital Motorbar™ XL cleaner head

De-tangling vanes automatically clear wrapped hair from the brush bar as you clean.

A rectangular battery with an slanted connector that slides into the handle of the main body of the machine.

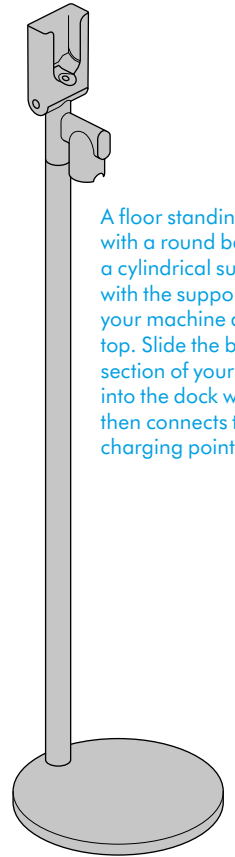


Additional click-in battery

Not all models are supplied with an additional click-in battery. You can buy additional click-in batteries at www.dyson.com.

Illuminated cleaner head

The illuminated cleaner head makes invisible dust visible on hard floors.



A floor standing dock with a round base and a cylindrical support with the support for your machine at the top. Slide the battery section of your machine into the dock where it then connects to the charging points.

Wall dock

The Dyson cordless vacuum drops into the wall-mounted charging dock, ready for your next clean.



Wand

The narrow connector end at the top, this connects to the bin and the wider end at the bottom that connects to the cleaner head or tool.

Dyson Floor Dok

The Dyson vacuum drops into the dock so it's easy to charge and put away, ready to grab and go when you need it.

Some tools and accessories may not be included.

You can buy additional tools and accessories at www.dyson.com.

This tool has a combination of brush head and crevice tool together in one unit. The brush head slides down the crevice tool when needed.



Combination tool

Two tools in one – wide nozzle and brush, for quick switching between cleaning and dusting tasks around your home or car.

A short nozzle with stiff bristles on the underside.



Stubborn dirt brush

Stiff nylon bristles dislodge ground-in dirt from coarse carpets, high traffic areas and car interiors.

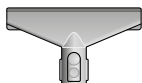


A long tool with an angled end.

Crevice tool

Engineered for precise cleaning around tricky edges and into hard-to-reach narrow spaces.

A wide, triangular shaped nozzle.



Fabric and mattress tool

Removes dust, dirt and allergens from mattresses and upholstery.

With an elbow joint, fitted between the bin and the tool.



Low-reach adaptor

Bends to comfortably reach down low. Engineered to clean further under low furniture by adjusting the wand angle up to 90°.

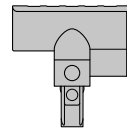
A plastic clip that attaches to the wand



Wand clip

Clips to your vacuum's wand to hold tools.

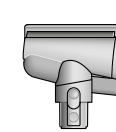
A small cleaner head with a body housing the motor and an electrical connector to attach to the wand or directly to the machine.



Mini motorised tool

Motorised brush bar, concentrated in a smaller head to remove stubborn dirt from mattresses, upholstery and stairs.

A small cleaner head with an angled body housing the motor and an electrical connector to attach to the wand or directly to the machine.



Hair screw tool

Anti-tangle conical brush bar spirals hair off and into the bin. Motor-driven cleaning for smaller spaces.

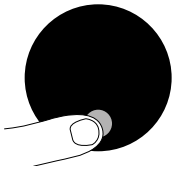
Pliable bristles and felt bumper strip on a narrow, tapered tool.



Soft dusting brush

Enclosed in a skirt of soft nylon bristles for gentle, vacuum-assisted dusting of delicate objects and surfaces.

Getting started



Power modes

Your machine has three power modes for different tasks. Change power modes quickly using a single button.



The screen showing the machine set to Eco mode with a full battery in green to show that this will give the longest battery life of the three modes.

Eco mode

Maximum run time for longer cleans all around your home.



Two screens showing the machine set to Auto mode and Med mode with a blue battery showing that this will give a medium length of battery life.

Auto and Med mode

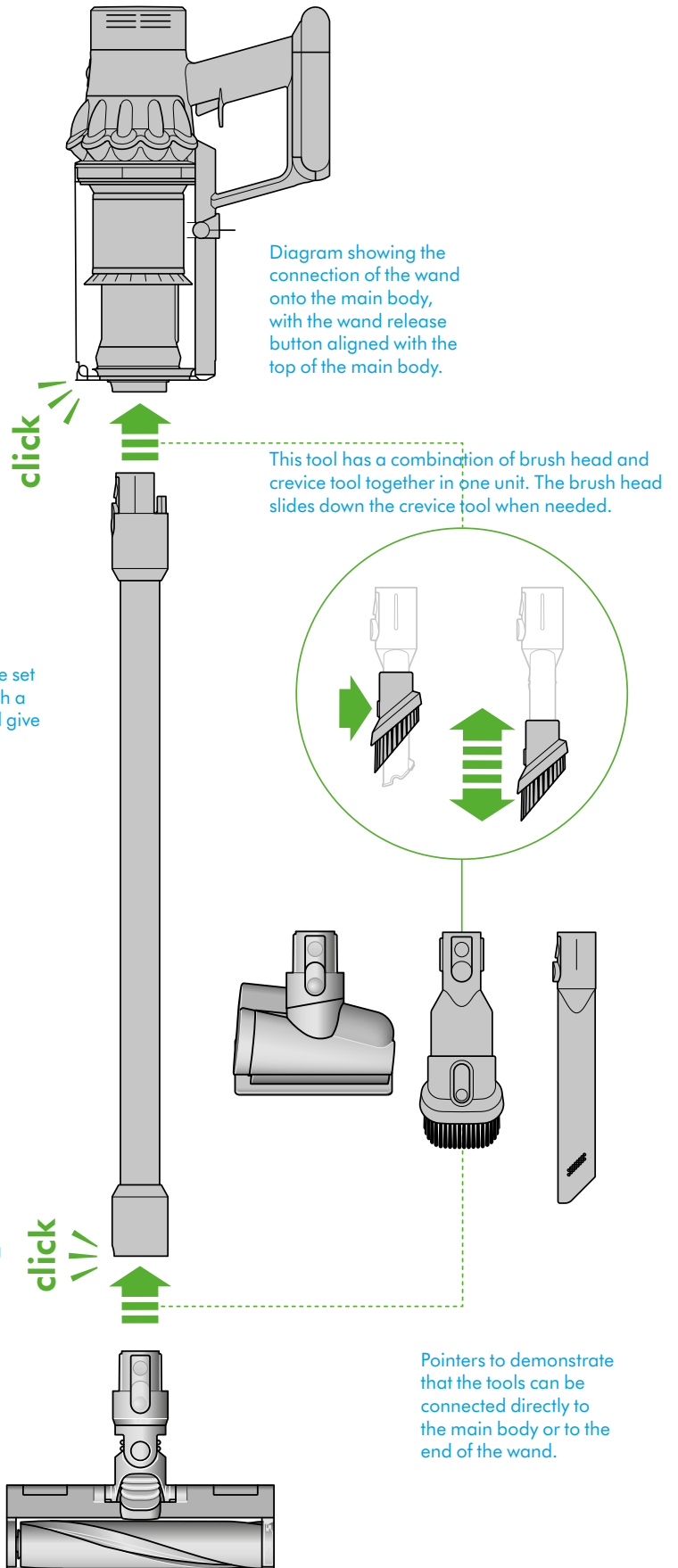
The optimum balance of power and run time. Attach your Digital Motorbar™ XL cleaner head to activate Auto mode. Dyson DLS™ technology automatically changes motor speed between floor types.



The screen showing the machine set to Boost mode with a red battery to show that this will give the shortest battery life of the three modes.

Boost mode

Designed for intensive spot cleaning of ground-in dirt.

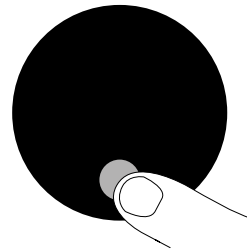


The LCD screen

The LCD screen shows the cleaning mode selected, remaining run time, filter maintenance and blockage information.

Settings menu

Control the settings on your machine using the Selection button. To enter the settings menu, press and hold the button until the menu screen appears. Tap to scroll through the options available.



The Selection button on the screen being pressed.

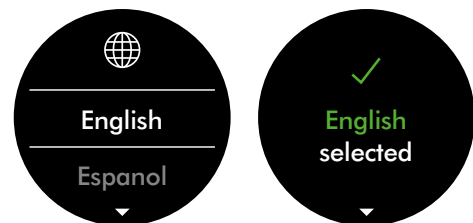
Change language

To change the language on your screen, press the button and hold until the language list appears. Release the button.

Tap the button to scroll through the language list to your preferred language. Press and hold the button until the countdown ends.

A green tick will appear on the screen to show your language selection is complete.

To cancel your selection, release the button during the countdown.



Two screens, the first with the language list and then the tick screen to show that the language has been successfully changed.

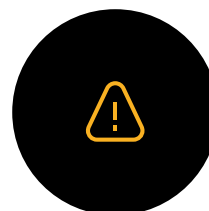
Change alert settings

You can turn the alert motor pulse off. Your motor will no longer pulse but run time alert information will continue to be displayed on the LCD screen when your machine needs your attention.

Turning off alerts will not turn off the blockage alert pulsing. This is to ensure you clear any blockages, preventing damage to your machine.

Tap to scroll through the settings menu. Select the 'Alerts' option.

Scroll to select on or off. Hold the button until the countdown ends and a tick appears on the screen. To cancel your selection, release the button during the countdown



The screen with an amber warning triangle to demonstrate an alert.

Run time countdown

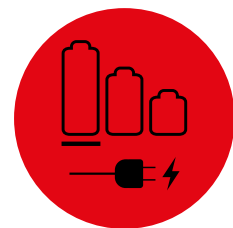
When the battery needs charging, your machine will pulse three times and a low run time icon will appear on the screen.

When your battery is empty, a red warning icon will appear on the screen.

When Particle count and graph is turned on, low run time will be in amber and red when in Boost mode.



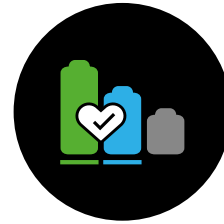
The screen with a battery time remaining shown as a number and as a half filled battery.



A red screen with an icon with a plug being connected to the power supply. This demonstrates the battery is empty and needs charging.

Battery health

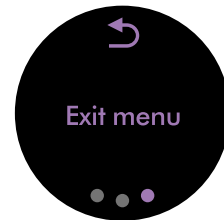
To get the best performance and life from your battery, use Eco or Auto/Med mode.



The battery health is shown on the batteries on the screen.

Exit settings menu

To exit the settings menu, tap to scroll through the selection menu. Select 'Exit menu'.



Screen with Exit menu wording and return icon.

Alerts

The alerts you might see are:

Filter – the filter isn't fitted correctly, or needs cleaning.

Blockage – your machine has a blockage that needs removing.

Alert icon with Fully charge before first use wording.



Alert icon with Airways blocked wording.

Alert icon with Filter not sealed wording.



Alert icon with Filter needs cleaning wording.

Caring for your floors

Check that the underside of the cleaner head or tool is clean and free from any objects that may cause damage.

Before vacuuming your flooring, rugs, and carpets, check the manufacturer's recommended cleaning instructions.

The brush bar on your machine can damage certain flooring. Some rug materials may fuzz if a rotating brush bar is used when vacuuming. If this happens, we recommend vacuuming without the motorised floor tool and consulting with your flooring manufacturer.

Charging your machine

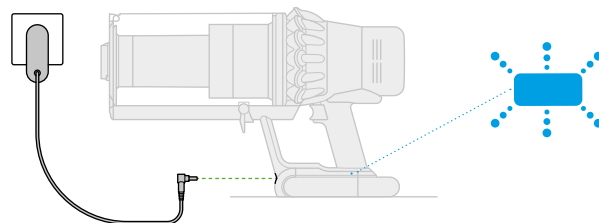
Connect to the charger either directly or in the dock.

The blue LEDs on either side of the battery will flash during charging.

When the battery is fully charged, both LEDs will light for 5 seconds.

Your battery is fully charged when the display shows 100%.

Your machine won't operate or charge if the ambient temperature is below 5°C (41°F). This is designed to protect both the motor and battery.



The charger connected from the power supply directly into the front of the battery.

Changing your click-in battery

If you have additional click-in batteries, we recommend that you alternate the batteries to maintain even performance.

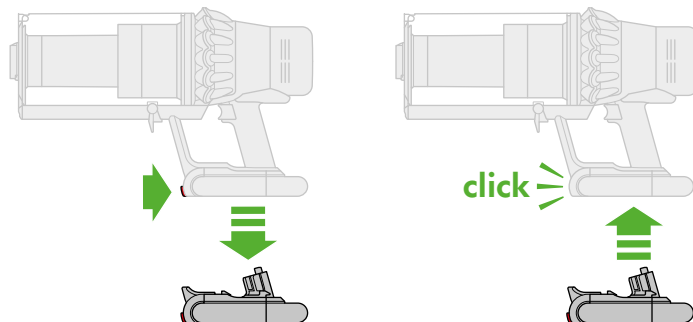
Removing your battery

Push the Battery release button on the handle and slide the battery off your machine.

Charge the battery.

Refitting your battery

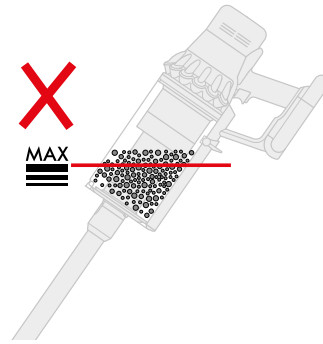
Align your battery with the handle and slide it in. Push firmly until it clicks into place.



Arrows showing the location of the Battery release button and the battery coming off the handle when the button is pressed. The battery is then shown being replaced on the base of the handle, clicking into place.

Emptying your bin

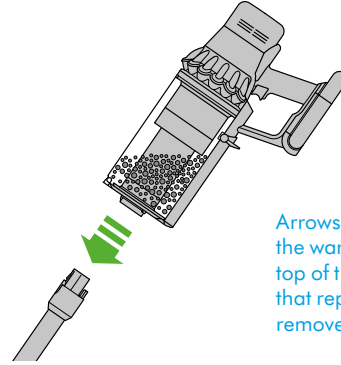
Empty as soon as the dirt reaches the MAX level – don't overfill. Using your machine when the dirt is above the MAX line may affect the performance and require more frequent filter washing.



The MAX mark on the bin of the machine, showing that the dirt should not be filled over the Max mark when the machine is at the angle of normal use.

Remove your wand

Press the red wand release button, on the top of the wand, and pull the wand away from the bin.



Arrows pointing to the location of the wand release button on the top of the wand and an arrow that represents the wand being removed from the machine.

Release the dirt

Hold the machine over the bin, pointing downwards.

Firmly push the red bin release button. The bin will slide down, cleaning the shroud as it goes, and the bin base will open.

The bin base won't open if the red bin release button isn't pushed down all the way.

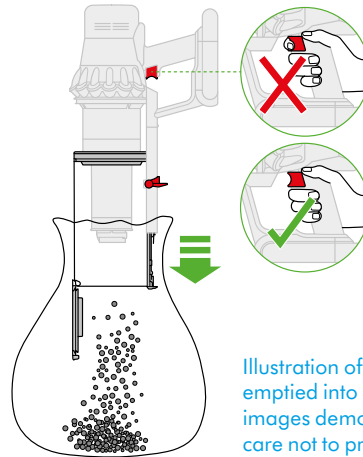


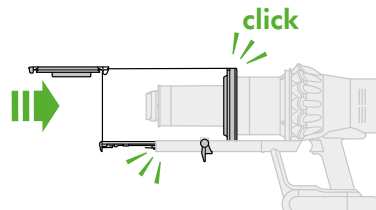
Illustration of the bin being emptied into a bag with images demonstrating to take care not to press the trigger when emptying the bin.

Minimise dust contact

Cover your bin tightly in a dust proof bag while you empty. Remove your bin carefully, seal the bag tightly and dispose.

Close the bin

Push the bin base upwards until your bin and bin base click into place.



The bin lid closing with an audible click and the bin being pushed upwards with another click once it is fully in place.

Cleaning your bin

Remove your bin

If it is necessary to clean your bin, empty it as shown in the 'Emptying your bin' section.

Press the red button located on the bin runner to release the bin and slide your bin off the runner.

Only use a damp, lint-free cloth to clean your bin.

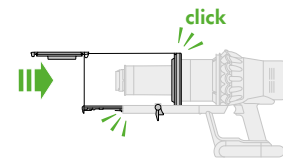
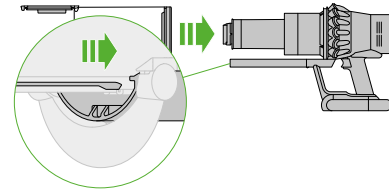
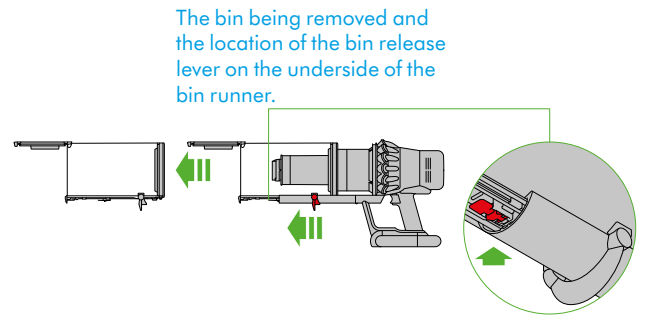
Make sure that your bin and seals are completely dry before replacing.

Refit your bin

Insert the spine on to the bin runner.

Close your bin by pushing the bin base upwards until the bin and bin base click into place.

Your bin isn't dishwasher safe and the use of detergents, polishes or air fresheners to clean your bin isn't recommended, as it may damage your machine.



Clearing blockages

Disconnect your machine from the charger before looking for blockages. Be careful not to touch the power button and be aware of sharp objects.

Leave your machine to cool down before looking for blockages.

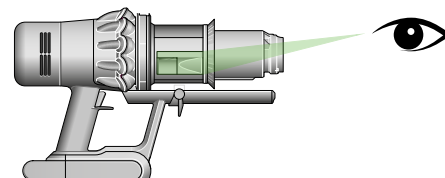
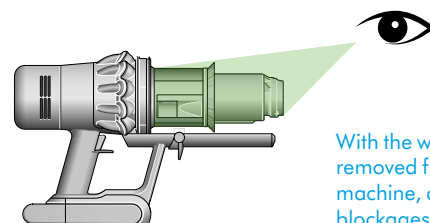
Don't use your machine when looking for blockages as this could cause injury.

If your machine detects a blockage, the motor will pulse six times. You won't be able to use your machine until the blockage has been cleared.

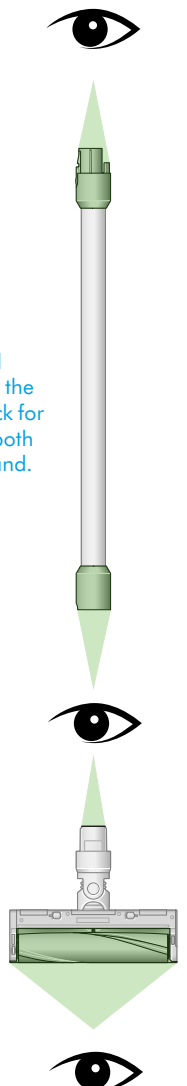
If you try to use your machine when the motor is pulsing, it will automatically cut out.

Leave your machine to cool down before looking for blockages and, for your safety, take care not to touch the trigger.

With the bin removed, check for blockages, paying particular attention to the air inlet, located at on the right-hand side of the machine just below the point where the bin joins the main body of the machine.



Turn the cleaner head over to check for obstructions on the brush bar and air inlet.



Clearing obstructions from your Motorbar™ cleaner head

Your Motorbar™ cleaner head doesn't have a washable brush bar. To maintain optimum performance, check your brush bar regularly and clear any obstructions.

Make sure your machine is disconnected from the charger and take care not to touch the trigger.

Remove your brush bar

Don't put any part of your machine in a dishwasher or use detergents, polishes or air fresheners.

Press the cleaner head release button on the end of the wand. Place the cleaner head upside down.

Lift the catch on the cleaner head to release the brush bar.

Slide your brush bar out of the cleaner head.

Look for obstructions

Clear any debris from your brush bar.

Check inside the cleaner head and remove any debris or blockages.

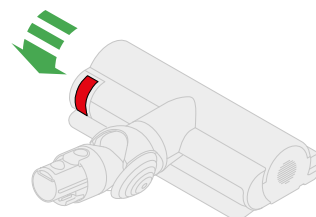
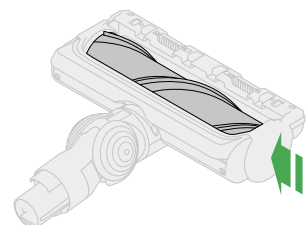
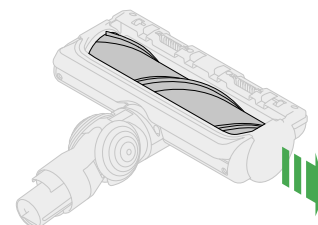
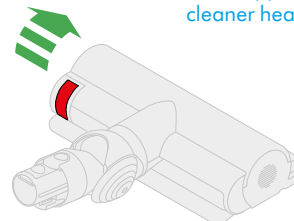
Your Motorbar™ cleaner head and brush bar aren't washable. Wipe over with a damp lint-free cloth.

Replace your brush bar

Push the brush bar back into the cleaner head.

Push down the brush bar release catch until it locks in position.

The brush bar release is located on the back of the cleaner head on the left hand side. The brush bar pulls out of the opposite end of the cleaner head.



Clearing blockages from your Hair screw tool

Your Hair screw tool doesn't have a washable brush bar. To maintain optimum performance, check your brush bar regularly and clear any obstructions.

Make sure your machine is disconnected from the charger and take care not to touch the trigger.

Remove the cover and brush bar

Remove the Hair screw tool from the wand or machine.

Push the base plate open. Press the red lever down to release the cleaner head cover.

Pull the cleaner head cover off the main body of the tool.

Look for obstructions

Pull your brush bar firmly to remove it from the main body.

Check and remove any obstructions from all three parts of your Hair screw tool.

Your Hair screw tool isn't washable. Wipe over with a damp lint-free cloth.

Don't put any part of your machine in a dishwasher or use detergents, polishes or air fresheners.

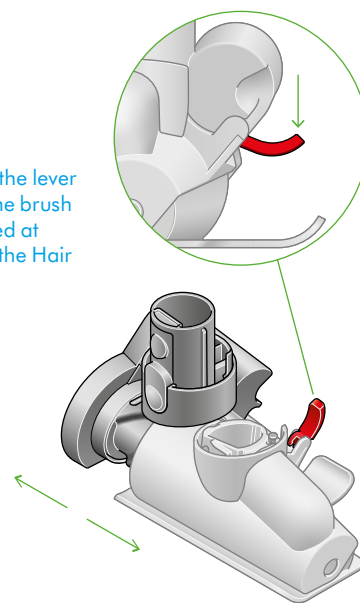
Re-assemble Hair screw tool

Put your brush bar back into position and press firmly until it clicks back into position.

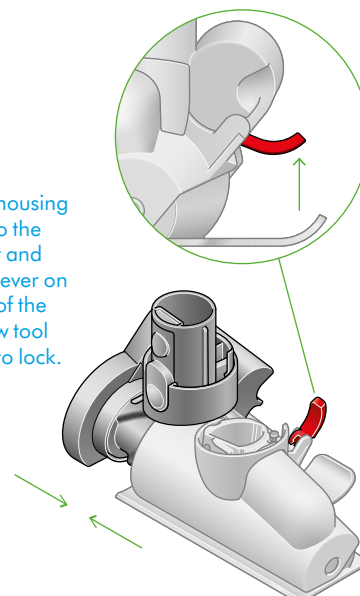
Check the red locking lever is in the unlocked position. Align the cleaner head cover with the guide on the main body. Push it down until it clicks into position.

Push the red locking lever up until it clicks into position and push the base plate back into place.

Location of the lever to release the brush bar is located at the back of the Hair screw tool.



Slide the housing back on to the brush bar and push the lever on the back of the Hair screw tool upwards to lock.



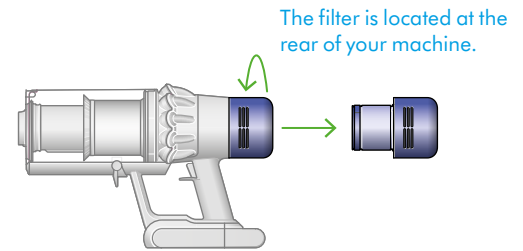
Washing your filter

Wash your filter at least once a month to maintain optimum suction power.

For more information and support videos for your machine go online: www.dyson.com/support

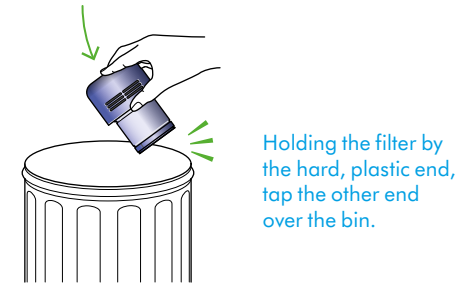
Twist off your filter

Twist your filter anti-clockwise and pull it away from your machine.



Tap your filter

Before washing your filter, tap it gently over a bin to remove any loose dust and debris.



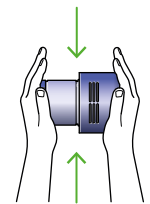
Wash your filter

Wash with warm, running tap water – gently rubbing your filter with your fingers to remove the dirt.

Filter held in upright position, with the wider end in the palm of a hand. Water running from a tap into the narrower end.



Filter with hand over the open end with arrows showing a shaking motion.



Fill and shake

Place your hand over one end of your filter.

Fill the filter with warm tap water.

Place your hand over the open end of the filter and shake it firmly to remove trapped dirt and debris.

Repeat these steps until the water runs clear.

Shake and dry

Empty the filter and shake firmly to remove excess water.

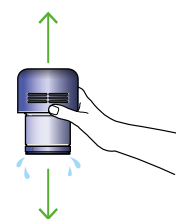
Keep shaking until there's no water coming from the filter.

Place your filter end up, as shown.

Place the filter on its end and leave to dry for at least 24 hours in a well ventilated, warm place.

Don't dry your filter in a tumble dryer, microwave or near a naked flame.

Important: your filter must be completely dry before you put it back into the machine. Your machine could be damaged if used with a damp filter.



A hand holding the filter with the narrow end pointing downwards with droplets of water being shaken from the filter and again, with the end pointing downwards shaking water out.



The filter is left to dry with the pleated filter end facing upwards.

Washing your Illuminated cleaner head brush bar

Your Illuminated cleaner head has a washable brush bar. To maintain optimum performance, check and wash your brush bar regularly.

Make sure your machine is disconnected from the charger and take care not to touch the trigger.

Remove your brush bar

Don't put any part of your machine in a dishwasher or use detergents, polishes or air fresheners.

Press the cleaner head release button on the end of the wand. Place the cleaner head upside down.

Push the end cap up fully and pull the brush bar out of the cleaner head.

Remove the end cap from the brush bar. Don't wash the end cap.

Slide your brush bar out of the cleaner head.

Wash and dry your brush bar

Hold your brush bar under running water and gently rub to remove any lint or dirt.

Stand your brush bar upright as shown. Leave to dry completely for at least 24 hours.

Replace your brush bar

Before replacing, check that your brush bar is completely dry.

Reattach the end cap to your brush bar.

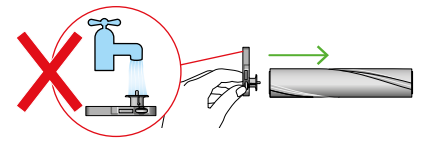
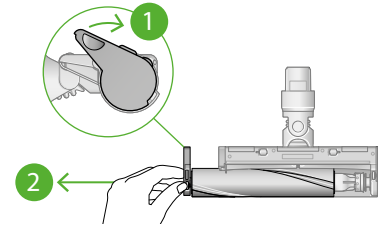
Slide your brush bar into the cleaner head. Push the end cap back down to the closed position.

Cleaning your optic lens

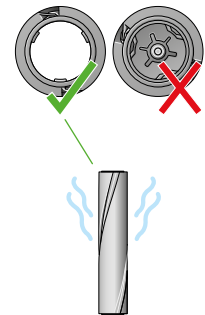
To maintain optimum performance, keep your optic lens clean. Only clean the lens when the cleaner head is not attached to your machine.

Use a soft, dry, lint-free cloth to wipe the lens.

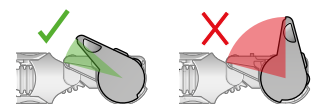
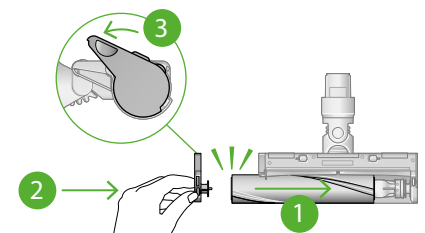
The end cap is located at the side of the cleaner head. Push this upwards to unlock the brush bar. Don't wash the end cap.



The brush bar has an open end and a closed end. Stand upright, with the closed end facing upwards, to dry.



The end cap should be attached to the cleaner head at an angle less than 90°, any angle greater than this will not allow the end cap to close.



Cleaning your tools

Don't put any part of your machine in a dishwasher or use detergents, polishes or air fresheners.

Wipe with a damp, lint-free cloth, without touching the connector end.

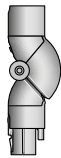
Make sure your tools are completely dry before using.



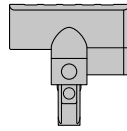
Combination tool



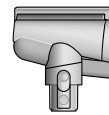
Crevice tool



Low-reach adaptor



Mini motorised tool



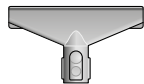
Hair screw tool



Soft dusting brush



Stubborn dirt brush



Fabric and
mattress tool

Looking after your machine

To always get the best performance from your machine, it's important to clean it regularly and check for blockages.

Look after your machine

If your machine is dusty, wipe with a damp lint-free cloth.

Check for blockages in the cleaner head, tools and main body of your machine.

Wash your filter regularly and leave to dry completely.

Don't use detergents or polishes to clean your machine.

Look after your battery

To get the best performance and life from your battery, use Eco mode.

Your machine won't operate or charge if the ambient temperature is below 5°C (41°F). This is designed to protect both the motor and battery.

Your serial numbers

You can find your serial numbers on your machine, battery and charger.

Use your serial number to register.