

# airwrap i.d.

## User manual



SV12 JN.00000 PN.000000-00-00  
00.00.00 VERSION NO.01

---

In the box

Getting started

Unlock i.d. curl™ personalised  
curling sequence by connecting

to the MyDyson™ app

Using your attachments

Pre-styling

Curling

Shaping

Volumising

Smoothing

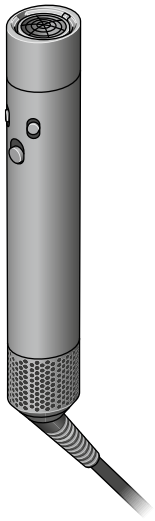
Diffusing

Stretching

Regular filter maintenance

**dyson**

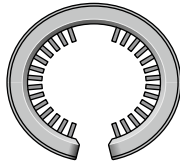
# In the box



Dyson Airwrap i.d.™  
multi-styler and  
dryer main body



Fast dryer

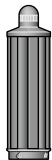


Filter cleaning brush

You can buy additional attachments at [www.dyson.co.uk/hair-care/accessories](http://www.dyson.co.uk/hair-care/accessories)



30mm  
Airwrap™  
barrel



40mm  
Airwrap™  
barrel



20mm  
Airwrap™  
barrel



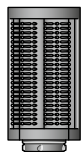
30mm  
Airwrap™  
long barrel



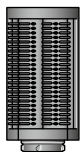
40mm  
Airwrap™  
long barrel



Conical  
Airwrap™  
barrel



Soft  
smoothing  
brush



Firm  
smoothing  
brush



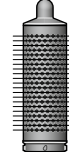
Small soft  
smoothing  
brush



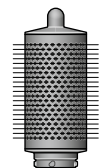
Small firm  
smoothing  
brush



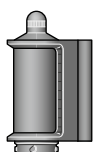
Small round  
volumising  
brush



Round  
volumising  
brush



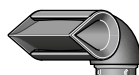
Large  
volumising  
round brush



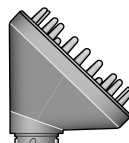
Dryer+  
Flyaway  
smoother



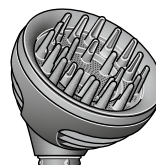
Fast dryer



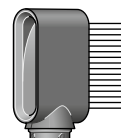
Blade  
concentrator



Diffuser

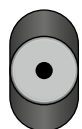


Wave+ Curl  
diffuser

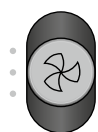


Wide-tooth  
comb

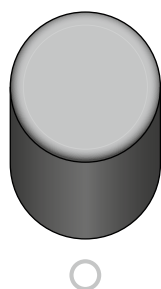
# Getting started



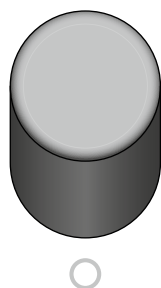
**Temperature control**  
Three temperature settings including constant cold.



**Airflow control**  
3 airflow speeds.

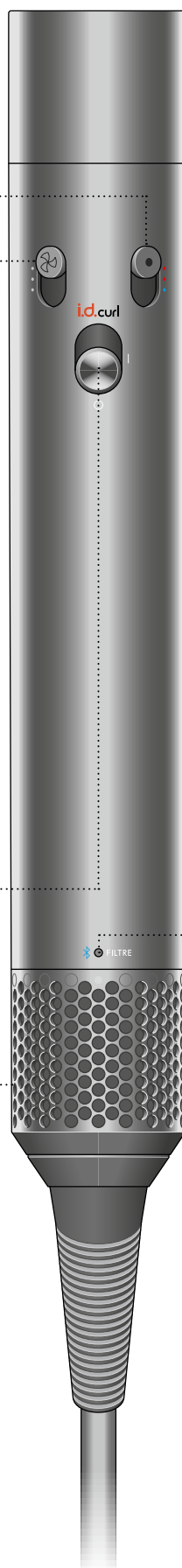


**Power on/off**  
Sliding switch



**i.d. curl™ personalised curling sequence**  
Complete the tutorial in the MyDyson™ app to unlock this feature. Slide up and release to activate.

**Removable filter cage**  
Easy to remove for cleaning (see the 'Regular filter maintenance' section for details).



**LED**  
Flashing blue – ready to connect.

Constant blue – connected.

Clean the filter. See the 'Regular filter maintenance' section for details.

If the red LED lights, and the filter has already been cleaned, contact the Dyson Helpline.

# Unlock i.d. curl™ personalised curling sequence by connecting to the MyDyson™ app

Download on the App Store. Get it on Google Play.

## Step 1

Download the MyDyson™ app and create your account. If you already have an account, log in.

## Step 2

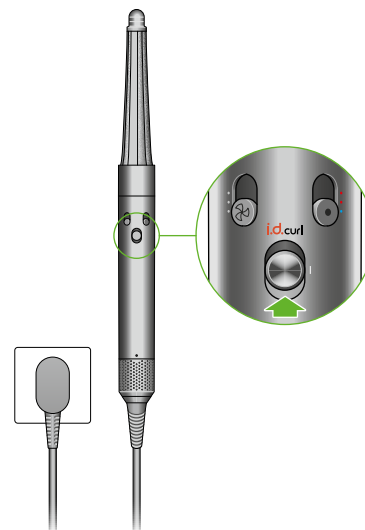
Power on your Dyson Airwrap i.d.™ multi-styler and dryer and add machine to the app. Bluetooth® wireless technology must be enabled on your mobile device.

## Step 3

Follow the steps to pair your Airwrap i.d.™. Airflow will be active during this time.

## Step 4

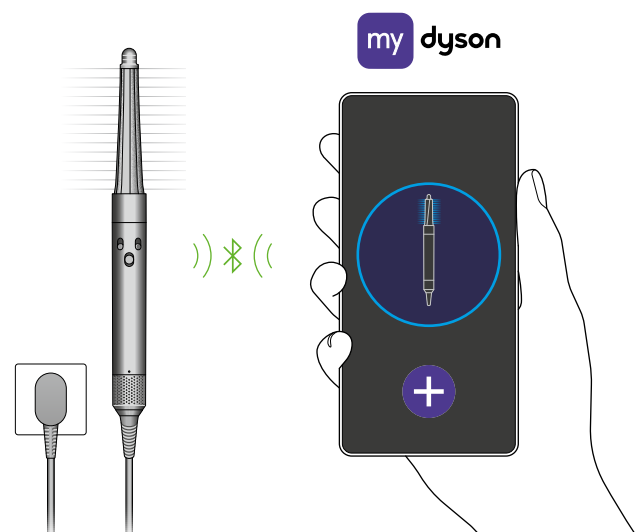
Once paired, power off your Airwrap i.d.™. Continue set-up in the app to enable features such as the i.d. curl™ personalised curling sequence.



## MyDyson™ app connectivity

App functionality may vary per market. Requires internet connection. Operating system and mobile device requirements for the MyDyson™ app can be found on the App Store or Google Play.

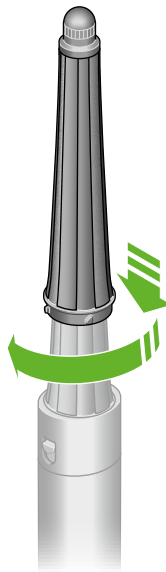
Apple, the Apple logo and Siri are trademarks of Apple Inc., registered in the U.S. and other countries. App Store is a service mark of the Apple Inc., registered in the U.S. and other countries. Google Play, the Google Play logo, Google Assistant are trademarks of Google Inc.



# Using your attachments

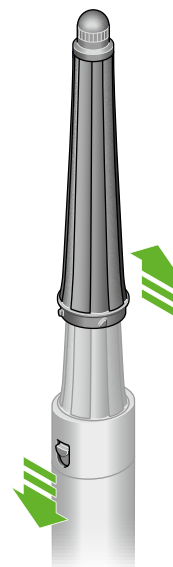
## Connecting the attachment

Turn attachment into the main body until it fits securely.



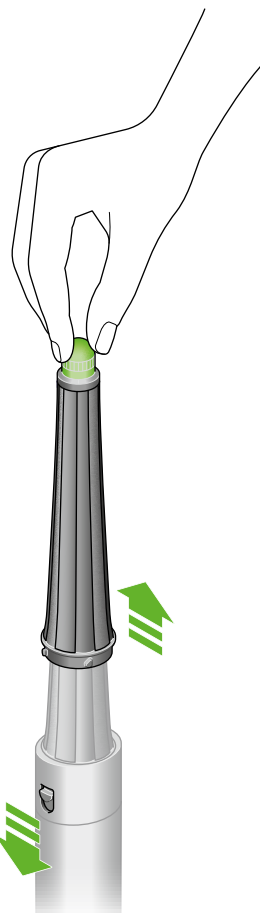
## Changing attachments

To change attachment, pull down on the switch to release.



## Cool touch tip

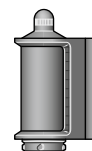
During use, the Dyson Airwrap™ barrels, round brushes and Dryer+Flyaway smoother will get hot. To change to another attachment, hold the tip.



## Take care when handling hot attachments

Hold the attachment only in the area indicated. Some attachments may need occasional cleaning.

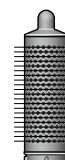
For more information, go to [www.dyson.co.uk/hair-care/accessories](http://www.dyson.co.uk/hair-care/accessories)



Dryer+Flyaway smoother



Conical Airwrap™ barrel



Round volumising brush

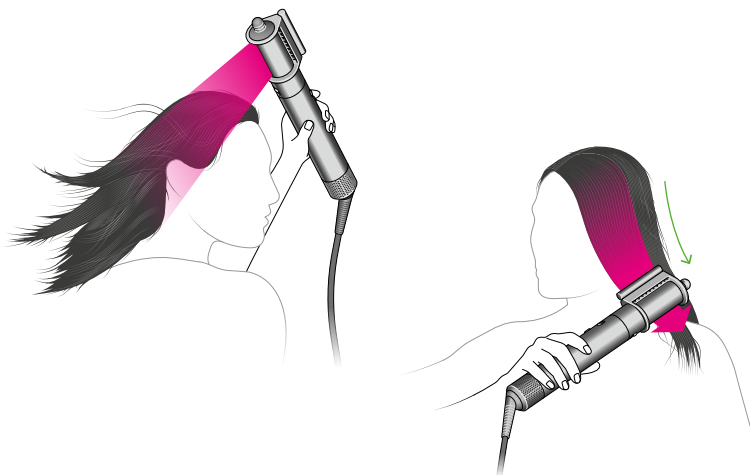
# Pre-styling

For straight and wavy hair, use a dryer attachment – Fast dryer or Dryer+Flyaway smoother.

The Dryer+Flyaway smoother has two modes (i) drying and (ii) smoothing. Use the cool tip to switch between the modes.

Hair should look dry but feel cold to the touch before curling with barrels.

For curly and coily hair, use the Firm smoothing brush. Brush hair downwards in small sections, starting from the ends and working towards the roots, until slightly damp to touch.



# Curling

## Using i.d. curl™ sequence

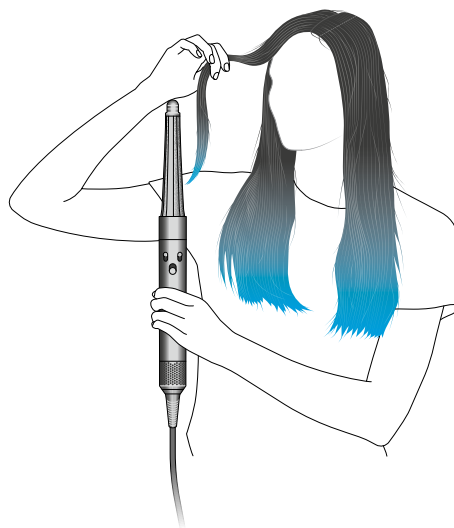
The Dyson Airwrap i.d.™ multi-styler and dryer remembers your personalised i.d. curl™ sequence. This tailors wrapping and styling times to your personal hair profile, using the MyDyson™ app.

Slide up and release the power switch to activate i.d. curl™ sequence, following initial app set-up.

## Barrels

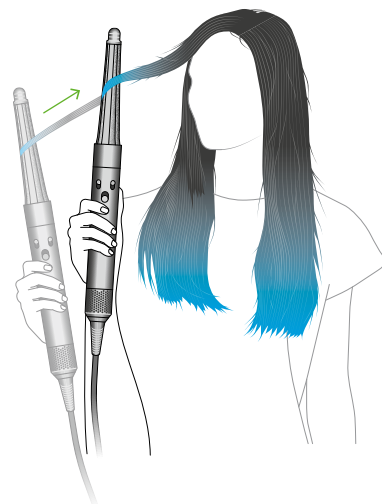
### Step 1

Take a section of hair and bring barrel towards tips. Hair will start to wrap around barrel.



### Step 2

Move styler towards head, no need to twist. Your personalised i.d. curl™ sequence will run.

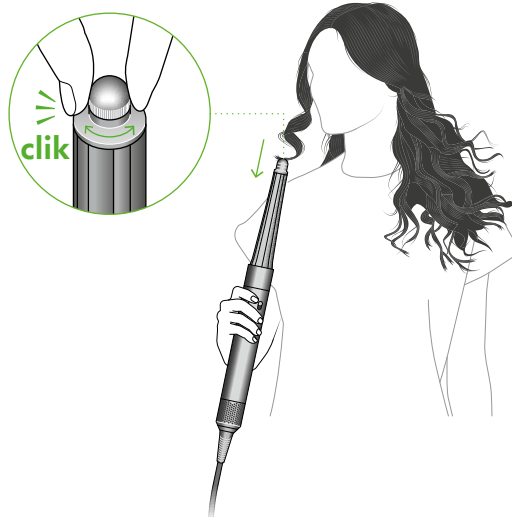


### Step 3

Cold shot will automatically activate to set the curl. Airflow will automatically reduce when sequence is complete.

Move device downwards to release.

To change curl direction, rotate the barrel's cool tip.



# Shaping

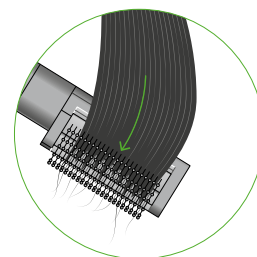
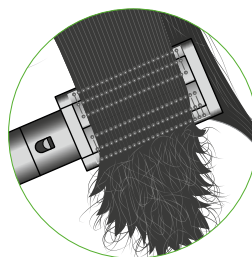
## Smoothing brushes

Use Smoothing brush to brush from root to tip.

### Tip:

For volume, face bristles outwards.

Turn brush inwards at the ends to create shape.

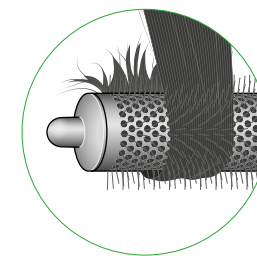
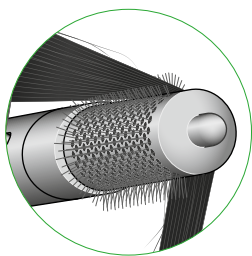


---

# Volumising

## Round volumising brush

The Round volumising brush has long fine bristles to direct air into the hair whilst giving body, creating tension to shape the hair as it dries.



### Tip

Lift sections upwards as you dry to add volume. Wrap hair around and under the brush to shape the ends.

### The Blade concentrator

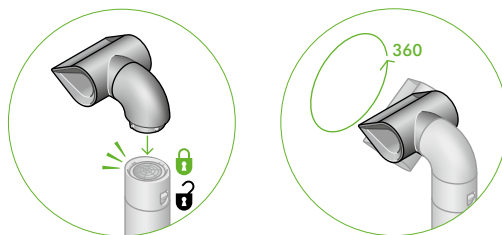
To create a smooth style.

Dry with a high-velocity blade of air for precision styling.

Focused airflow to create bends and flicks with a brush.

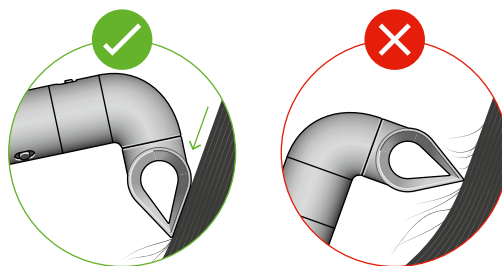


Once secured, the Blade concentrator can be rotated 360 degrees for ease when styling.



### Tip

Angle attachment down the hair tress to avoid disruption and to create a smooth, aligned finish.

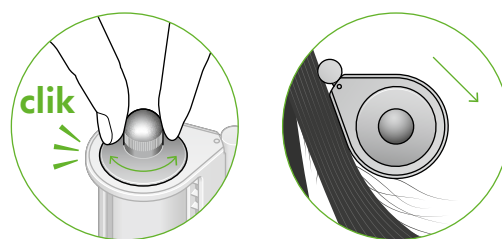


## Smoothing

### Dryer+Flyaway smoother

Rotate cool tip to select Smoothing mode.

Press against hair to switch airflow direction.



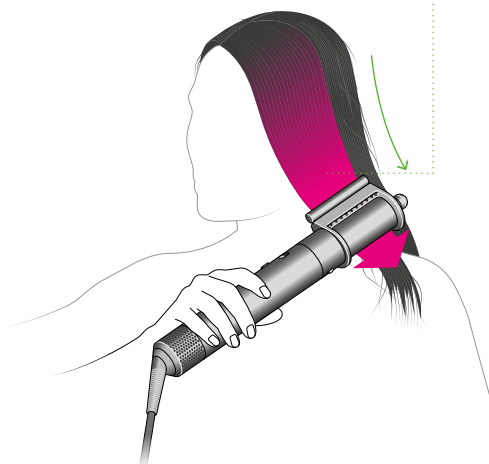
Use on dry hair to hide flyaways.

Position against hair until it attracts then slowly run down to tips.

For use on dry and straight hair.

### How to use the contact bar

Position contact bar against the head until you hear a click and hair attracts. Run from root to tip to hide flyaways.



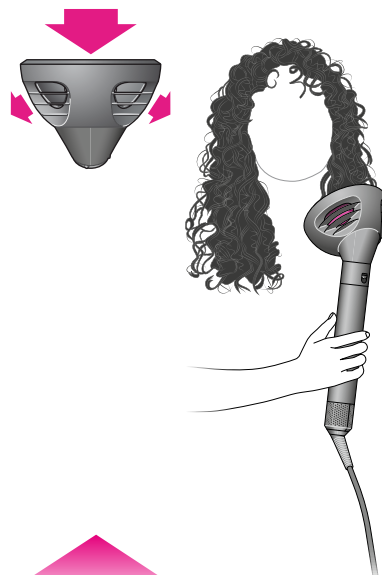


# Diffusing

## Wave+ Curl diffuser

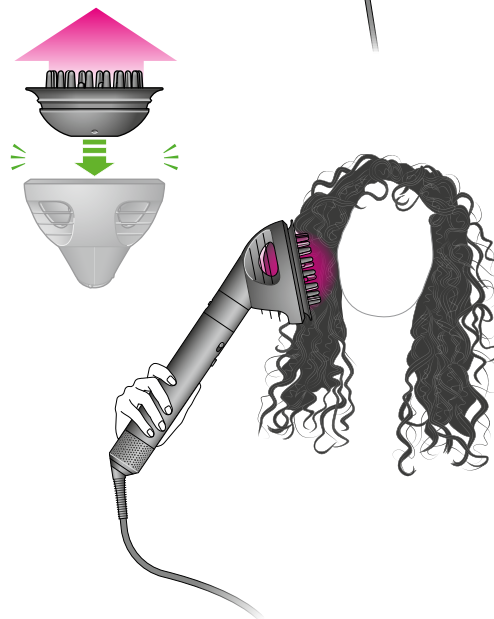
### Dome mode

Airflow is drawn into the dome to help enhance and smooth natural waves or curls.



## Diffuse mode

Detachable prongs disperse airflow to the roots for textured, voluminous curls and coils.



---

# Stretching

## Wide-tooth comb

Comb hair downwards in small sections. Starting from the ends and working upwards towards the roots, until desired result is achieved.



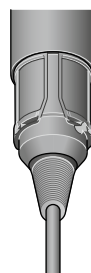
# Regular filter maintenance

Filter cleaning is overdue when the white LED starts flashing.

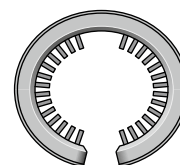
Ensure that you unplug your appliance from the mains electricity supply and allow to cool down before cleaning your filter.

The Dyson Airwrap i.d.™ multi-styler and dryer has highly tuned technology to give outstanding performance.

This technology needs to be kept free from dust and hair product residue. Maintenance is required to maintain performance.



Filter mesh



Filter cleaning brush



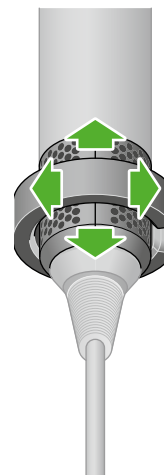
Filter cage

## Step 1

Slide the filter cleaning brush over the cable and onto the filter cage.

Using a rotating action, clean the filter cage thoroughly.

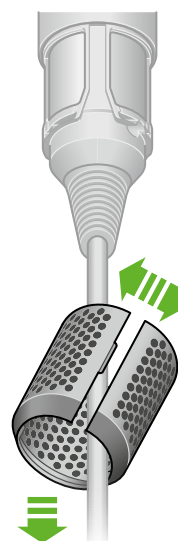
Remove the filter cleaning brush.



## Step 2

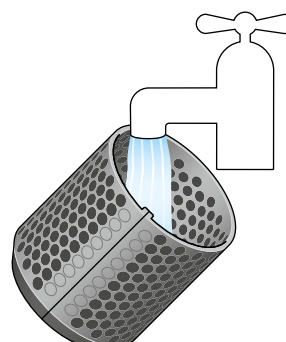
Hold the handle of your appliance and pull the filter cage downwards, onto the cable.

Gently pull open the filter cage and slide it off the cable.



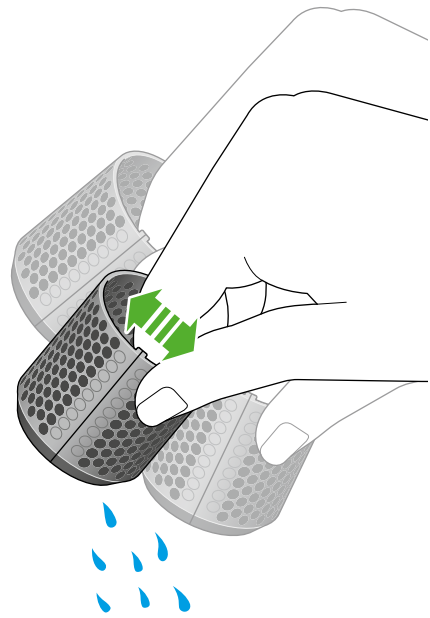
## Step 3

Wash the filter cage under a warm, running tap.



**Step 4**

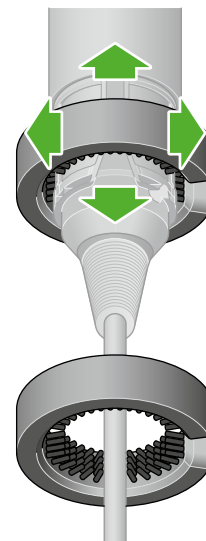
Shake the filter cage to remove the majority of the excess water, then leave to dry naturally.



**Step 5**

Using a rotating and up and down action, clean the filter mesh with the filter cleaning brush until all the debris has been removed.

Do not use water or chemicals to clean the filter mesh.



**Step 6**

Gently pull the filter cage open and slide it onto the cable.

Slide the filter cage towards the handle and twist until it snaps into place.

