

User manual

Image of the
Dyson Airstrait
straightener



Contents

In the box

Getting started

Using your straightener

Settings

Cleaning your machine

Cleaning the filter

Cleaning the tension bars

Cleaning the diffusers

Deep cleaning the filter

Alerts

In the box



Dyson Airstrait
straightener

Dyson Airstrait™ straightener
Wet to dry straightening, with air.
No hot plates. No extreme heat.¹
Uses high-velocity air, not hot
plates. Straightens from wet to dry.
Engineered to create a natural
straight finish.

Image of the heat mat



Velvet heat mat / Non-slip heat mat
For safe placement during and
after styling.

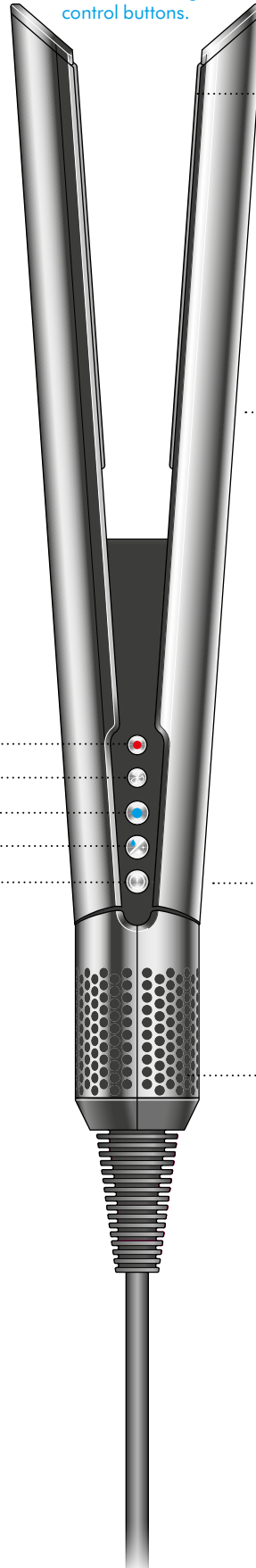
1. When used in wet to dry mode.

Getting started

Full machine with arms unlocking and opening.



Large image of Dyson Airstraight showing control buttons.



Unlock
Open the machine's arms by sliding the lock button down.

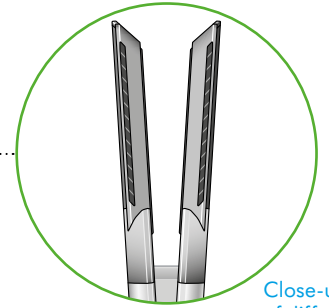
Close-up of lock button shown in green, moving downwards.



Arrow pointing to tension bars on machine arms.

Tension bars
Help control and add tension to the hair within the arms.

Diffusers
Gently diffuse airflow when close to the skin, for comfortable styling.



Close-up of diffuser vents on machine arms.

LCD Screen
Displays airflow and temperature settings.

Close-up of red and silver temperature control button.



Temperature control
Five precise temperatures for wet or dry styling, plus optional Boost mode.

Close-up of silver airflow control button.



Airflow control
Two speed settings, low flow and high flow.

Close-up of blue and silver Cool mode button.



Cool mode
Use to set your style.

Close-up of silver Mode select button with wet and dry icons.



Mode select
Style from wet or dry.

Close-up of silver power and standby button.



Power On/Standby

Lock button
Slide button to lock and unlock arms.



Close-up of lock button shown in green, moving downwards.

Filter
Removable filter.

Using your straightener



Your straightener is designed to be used with towel-dried hair, not dripping wet hair. Once towel-dried, detangle your hair with a brush or comb.

Your straightener should never be used without the fan motor on.

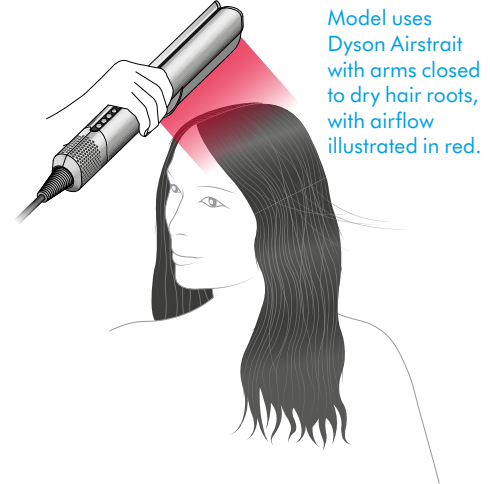
Straightening from wet

Before starting to straighten your hair, dry your roots with the arms of your straightener closed. You can use your straightener with the arms locked or just hold them closed.

For the optimum experience, use maximum airflow and a higher temperature, and direct the airflow towards your roots.



Wet mode icon, as shown on machine screen.



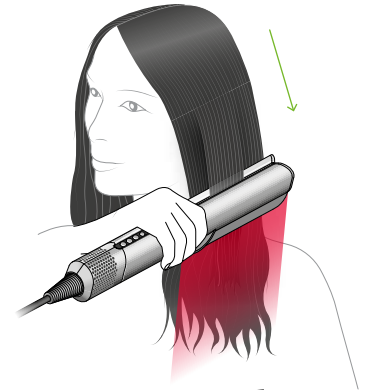
Model uses Dyson Airstraight with arms closed to dry hair roots, with airflow illustrated in red.

Unlock the arms and use the Mode select button to set your straightener to Wet mode.

Your straightener will give you a choice of temperatures that you can change according to your hair type and styling preference. Use lower temperatures for finer hair, and higher temperatures for thicker hair.

Hold your straightener so that the airflow is directed downwards and start to pass sections of hair through the arms. Repeat until each section is dry. Change the airflow and temperature settings as required.

Model straightens a tress of wet hair, with airflow illustrated in red.



Refresh from dry

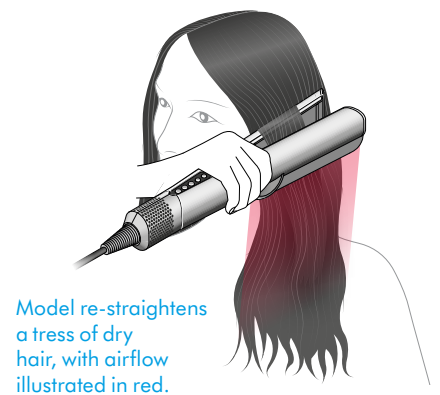
Use Dry mode only to refresh your style.

Unlock the arms and use the Mode select button to set your straightener to Dry mode.

In Dry mode, your straightener has a choice of temperatures and an additional Boost when needed.



Dry mode icon, as shown on machine screen.



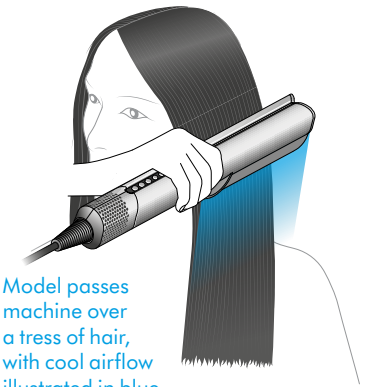
Model re-straightens a tress of dry hair, with airflow illustrated in red.

Cool mode

Use Cool mode to set your style. Hold your straightener with the arms shut and direct the airflow down the hair section to smooth and set.



Cool mode icon, as shown on machine screen.



Model passes machine over a tress of hair, with cool airflow illustrated in blue.

Wet mode icon, as shown on machine screen, and red temperature control button.

Adjusting the temperature

Press the Temperature control button to change the setting for your hair type and styling preference.



Dry mode icon, as shown on machine screen, and red temperature control button.



CELSIUS
(SWAP
DEPENDING ON
MARKET, DELETE AS
NECESSARY)



FAHRENHEIT
(SWAP
DEPENDING ON
MARKET, DELETE AS
NECESSARY)

Temperature scales in Celsius, reading 80°, 110° and 140° for Wet mode, and 120°, 140° and Boost for Dry mode.

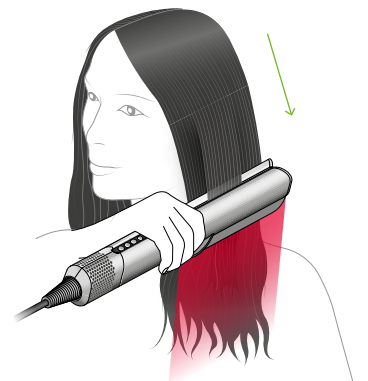
Temperature scales in Fahrenheit, reading 175°, 230° and 285° for Wet mode, and 250°, 285° and Boost for Dry mode.

Boost

Select Boost when styling dry hair for a shot of extra heat.



Dry mode icon, as shown on machine screen, and red temperature control button.



Model re-straightens a tress of dry hair, with airflow illustrated in red.

Adjusting the airflow

Press the Airflow button to toggle between high and low airflow.

Silver temperature control button.

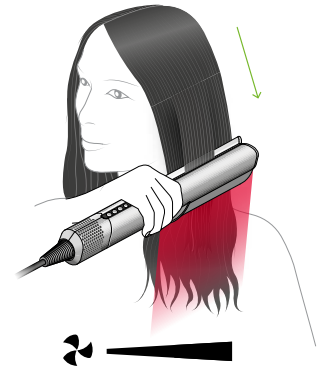
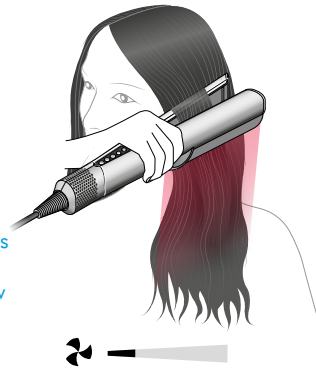


Low and high airflow icons, as shown on machine screen.

Idle mode

Between passes, your straightener will activate Idle mode. Airflow will reduce, then increase as soon as you close the arms.

Model positions machine at the top of a tress, with arms open. Airflow icon below indicates low airflow.



Model passes machine down the tress, with arms closed. Airflow icon below indicates high airflow.

Auto pause

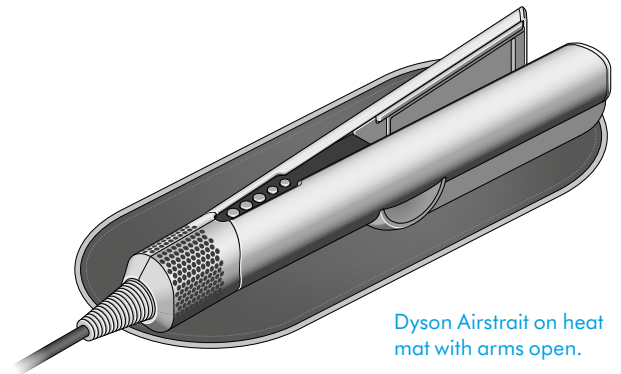
To save energy, your straightener will Auto pause when left for three seconds with the arms open. It will activate again when you pick it up.



Close-up of machine screen, showing airflow icon overlaid with red pause icon.

Stand-by

To save energy, your straightener will go into standby if left unattended with the arms open for more than three minutes. Press the Power button to re-activate.



Dyson Airstrait on heat mat with arms open.

Go to www.dyson.ph/en_ph/products/hair-care/hair-styling-guides for styling tips and guides.



Idle mode may cause lights to dim

High power appliances, such as your Dyson Airstrait™ straightener, may cause lights in your home to flicker or dim. They draw more electricity, which temporarily takes power away from other appliances on the same circuit.

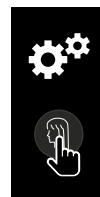
If light dimming occurs when using your straightener, try plugging in to a different outlet and circuit. A professional can help to identify suitable outlets.

Settings

Your Dyson Airstraii™ straightener has a settings menu to help you customise your machine to your usage. Press and hold the Mode select button to access the menu on the LCD screen.



Close-up of silver Mode select button.



Hand icon holds down button to access Settings menu, illustrated by machine cogs.

IS SCREEN TO BE AMENDED? PLEASE CONFIRM WHAT IT SHOULD LOOK LIKE

Idle mode

You can enable or disable Idle mode on your machine.

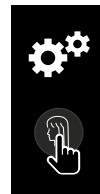
DEPENDANT ON MARKET

Press and hold the Mode select button on your straightener until the menu appears.

Press the Cool mode button to toggle between on and off.



Close-up of silver Mode select button.



Hand icon holds down button to access Settings menu, illustrated by machine cogs.



Idle mode option toggled on.

Auto pause

You can prevent your straightener from Auto pausing.

Press and hold the Mode select button on your straightener until the menu appears.

Use the Mode select button to scroll through the menu options. Press the Cool mode button to select and press again to toggle between on and off.



Close-up of silver Mode select button.



Hand icon holds down button to access Settings menu, illustrated by machine cogs.



Auto-pause option toggled on.

Units

Press and hold the Mode select button on your straightener until the menu appears.

Press the Cool mode button to toggle between °C and °F.



Close-up of silver Mode select button.



Hand icon holds down button to access Settings menu, illustrated by machine cogs.



Units option toggled to Fahrenheit.

Language

Press and hold the Mode select button on your straightener until the menu appears.

Press the Mode select button to scroll through the language options.

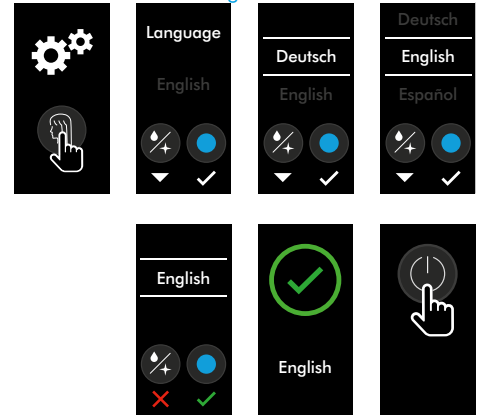
Press the Cool mode button to select the language you want and then press again to confirm. A tick will appear on the screen to confirm your selection.

Hand icon holds down button to access Settings menu, illustrated by machine cogs.

On-screen journey shows language options in list, with buttons to navigate and confirm choice.



Close-up of silver Mode select button.



Hand icon presses Power button to exit.

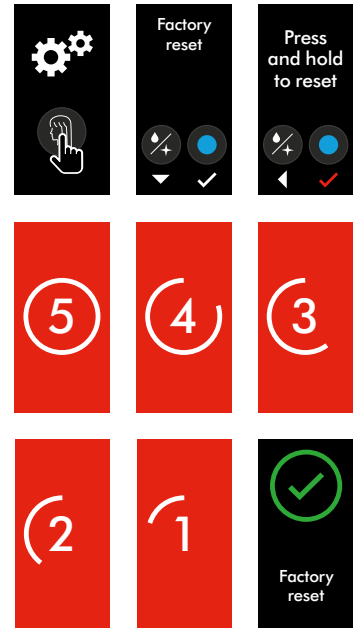
Factory reset

Press and hold the Mode select button on your straightener until the menu appears.

Press the Cool mode button to start a factory reset.



Close-up of silver Mode select button. Hand icon holds down button to access Settings menu, illustrated by machine cogs.



On-screen journey shows Factory reset option, reads 'Press and hold to reset'.

Red screens count down from five to one.

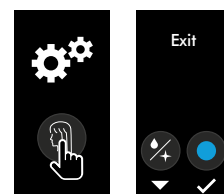
Final screen reads 'Factory reset' with green tick.

Exit

Use the Mode select button to scroll through to the Exit screen and press the Cool mode button to select.



Close-up of silver Mode select button.



Hand icon holds down button to access Settings menu, illustrated by machine cogs. Screen shows Exit option.

Cleaning your machine

Your straightener has been precisely engineered. To maintain outstanding styling performance, it needs to be kept free from hair product residue and debris. A little regular maintenance will optimise performance.

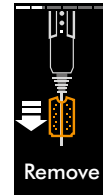
Cleaning the filter

Remove the filter

Unplug your straightener and let it cool down before cleaning your filter.

Hold the body of your straightener with one hand and the perforated filter unit with the other. Pull down on the filter unit to release it from the machine and onto the cable.

Gently pull the filter open and slide it off the cable.



Screen reads 'Remove', shows filter being removed in downwards motion.



Wash the filter

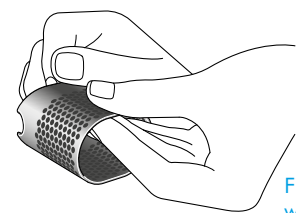
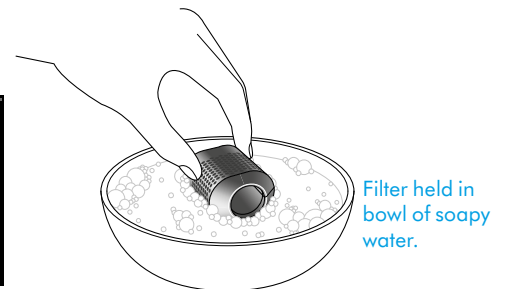
Leave the filter unit to soak in warm, soapy water for at least 30 minutes. We recommend using a clarifying shampoo or dish soap.

Using your fingertips, rub gently to thoroughly clean both the inside and outside surfaces of the filter.

Shake off excess water and leave for 24 hours in a well-ventilated place until completely dry.



Screen reads 'Soak', shows filter soaking in soapy water.

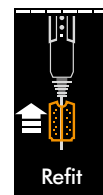


Replace the filter

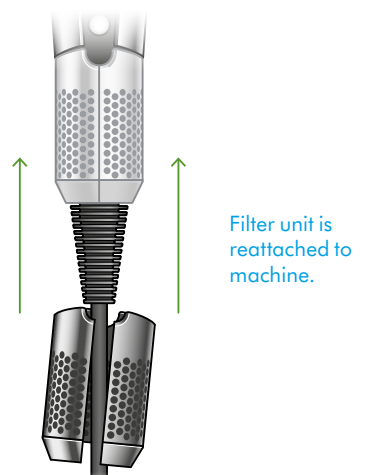
Pull the filter open and slide it onto the cable.

Slide the filter unit towards the machine body, align and click into place.

Your straightener will alert you if the filter isn't in place correctly.



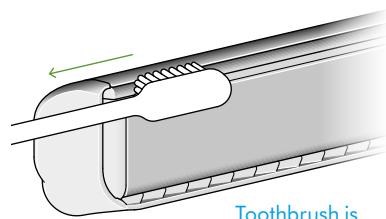
Screen reads 'Refit', shows filter being reattached to machine.



Cleaning the tension bars

Over time, hair product residue may build up on the tension bars. These bars sit at the top of the inside of each arm and it's important to keep them clean and free from debris.

Use a soft-bristled toothbrush and a small amount of warm water to brush away any debris. Dry with a clean, lint-free cloth.



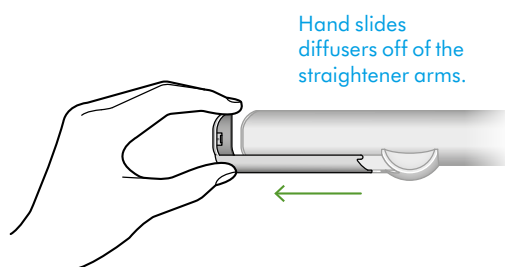
Toothbrush is used to clean tension bars.

Cleaning the diffusers

The diffusers are attached to the sides of the straightener's arms. We recommend these are kept clean, free from debris and hair product residue. This will keep them functioning effectively.

Ensure machine is switched off then slide the diffusers off the ends of the arms. Use a damp, lint-free cloth to remove any debris and hair product residue. You can also use a soft-bristled toothbrush to remove any stubborn residue.

Refit the diffusers to the arms once clean and fully dry. We recommend that you don't use your straightener without the diffusers attached.



Hand slides diffusers off of the straightener arms.

Deep cleaning the filter

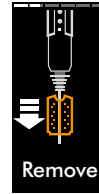
If the filter becomes blocked, you can deep clean it.

Remove filter unit

Unplug your straightener and let it cool down before cleaning your filter.

Hold the body of your straightener with one hand and the perforated filter unit with the other. Pull down on the filter unit to release it from the machine and onto the cable.

Gently pull the filter open and slide it off the cable.



Screen reads 'Remove', shows filter being removed in downwards motion.

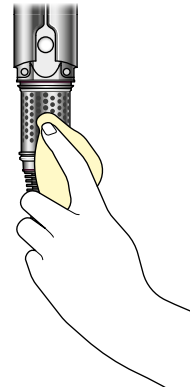
Filter being removed from machine.



Wipe filter mesh

Wipe the filter mesh with a dry, lint-free cloth to remove any debris.

Filter mesh is wiped with cloth.



Soak filter unit

Leave the filter unit to soak in warm, soapy water for at least 30 minutes. We recommend using a clarifying shampoo or dish soap.



Screen reads 'Soak', shows filter soaking in soapy water.

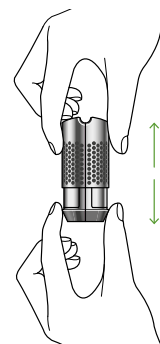
Filter held in bowl of soapy water.



Remove inner filter

Remove from the filter cage.

Hands removing the inner filter from the cage.



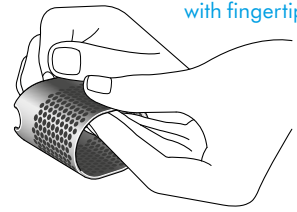
Rub gently, rinse, then dry

Using your fingertips, rub gently to thoroughly clean each part. Rinse both parts of the filter unit to remove any debris.

Icons show both parts of the filter being washed.



Filter is cleaned with fingertips.

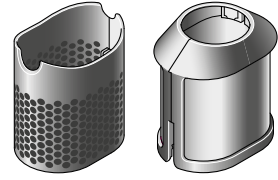


Allow both parts of the filter unit to air-dry completely or gently wipe with a lint-free cloth.

Icons show both parts of the filter drying to 100% dry.



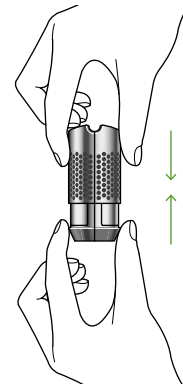
The two parts of the filter, fully dry.



Replace inner filter

Check that all debris has been removed before replacing the inner filter in the filter cage.

Hands replace the inner filter to the filter cage.



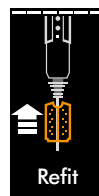
Replace filter unit

Pull the filter open and slide it onto the cable.

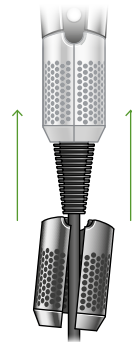
Slide the filter unit towards the machine body, align and click into place.

Your straightener will alert you if the filter isn't in place correctly.

Screen reads 'Refit', shows filter being reattached to machine.



Filter unit is reattached to the machine.



Alerts

Clean filter

You can continue to use your straightener but we recommend you clean the filter for optimum performance.

Scan the QR code on the screen to help fix this alert or follow the Cleaning your filter instructions above.

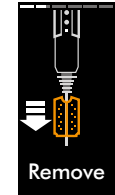


Alert screen reads 'Clean filter', icons show filter cage being removed from machine.

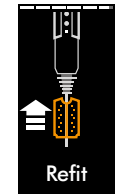
Filter blocked

Your straightener won't operate until the filter is cleaned.

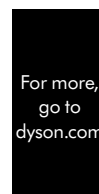
Scan the QR code on the screen to help fix this alert or follow the Cleaning your filter instructions above.



Screen shows 'Filter blocked' alert, followed by a QR code reading 'Show me'. Icons show the filter being removed to clean.



Screens show steps to clean the filter: soak, wash, dry and refit.



Final screens read 'For more, go to dyson.com' and repeat the QR code.

No filter

The filter isn't fitted correctly or is missing. Your straightener won't operate until fitted.



A 'No filter' alert is shown, with icon showing the filter cage being reattached to the machine.

Contact Dyson

There is a fault with your straightener. Please contact Dyson.



A red alert shows on screen, reading 'Contact Dyson', followed by a QR code.

Volt alert

Your machine has either been plugged into a power source with the incorrect voltage or the voltage is fluctuating.

Plug into a stable, compatible power supply.



Screen reads 'Volt alert' with power icon and exclamation mark.

Too hot

Your straightener has become too hot and will need to cool down.

Turn off your straightener, unplug and leave to cool down.



Screen shows red temperate icon and reads 'Too hot'. Instructions follow to turn off and unplug.



Instruction screens follow to cool down machine, plug in and turn on.

Reset

Your straightener has an error. Press the Power button to turn off your straightener and then turn it on again.

If this doesn't clear the alert, turn off your straightener and unplug from the power source. Plug in and turn on again.



Two reset screens show power and voltage icons with exclamations.